

imperfection of existence



straw used to create silhouette of idol
Photograph by me



smoothing and creating clothing shapes
and finishing using mud & clay.
Photograph by me



carving the silhouette and adornments
Photograph by me



adding color to the idol using paint
Photograph by me



unfinished Durga maa
idol in Kutchartudi

- juxtapose east + west.
- organic & raw
- art of 'making'
- textile oriented
- nostalgia

key research



used cement bags at Kumartuli
Photograph by me



imperfection
of existence

more knotting in scaffolding
Photograph by me

key research



corn dollies for made for Harvest time



Japanese Mino raincoat
online image



Jack (male figure made from the last
straw in the harvest) during the
Strawjack Festival in the UK
online image



Drawing the solemn Process by Ana
Lupus
part of Tate Modern exhibition

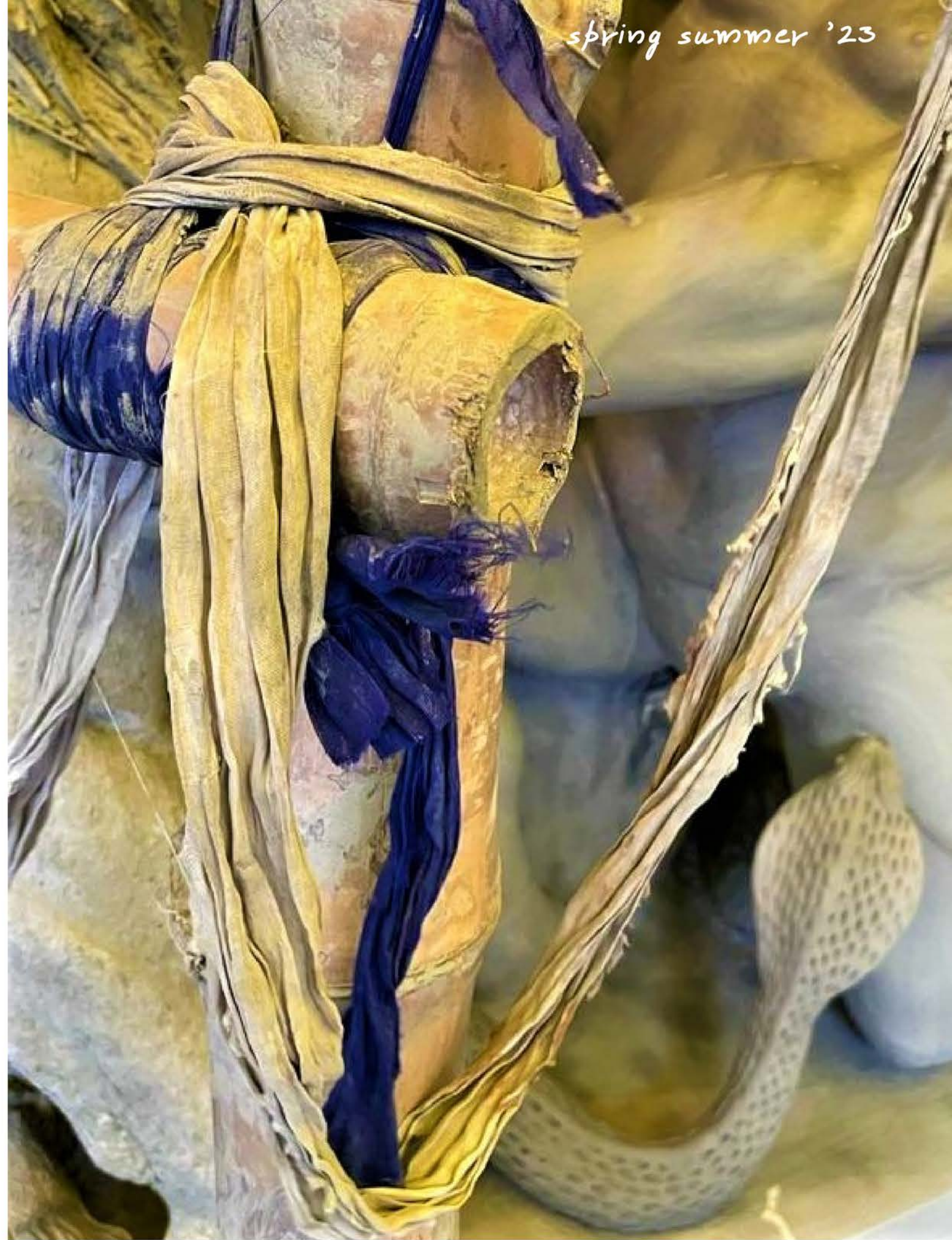


discarded straw structure and leftover straw.
Photograph by me

key research



spring summer '23



bamboo scaffolding tied with cloth.
Photograph by me

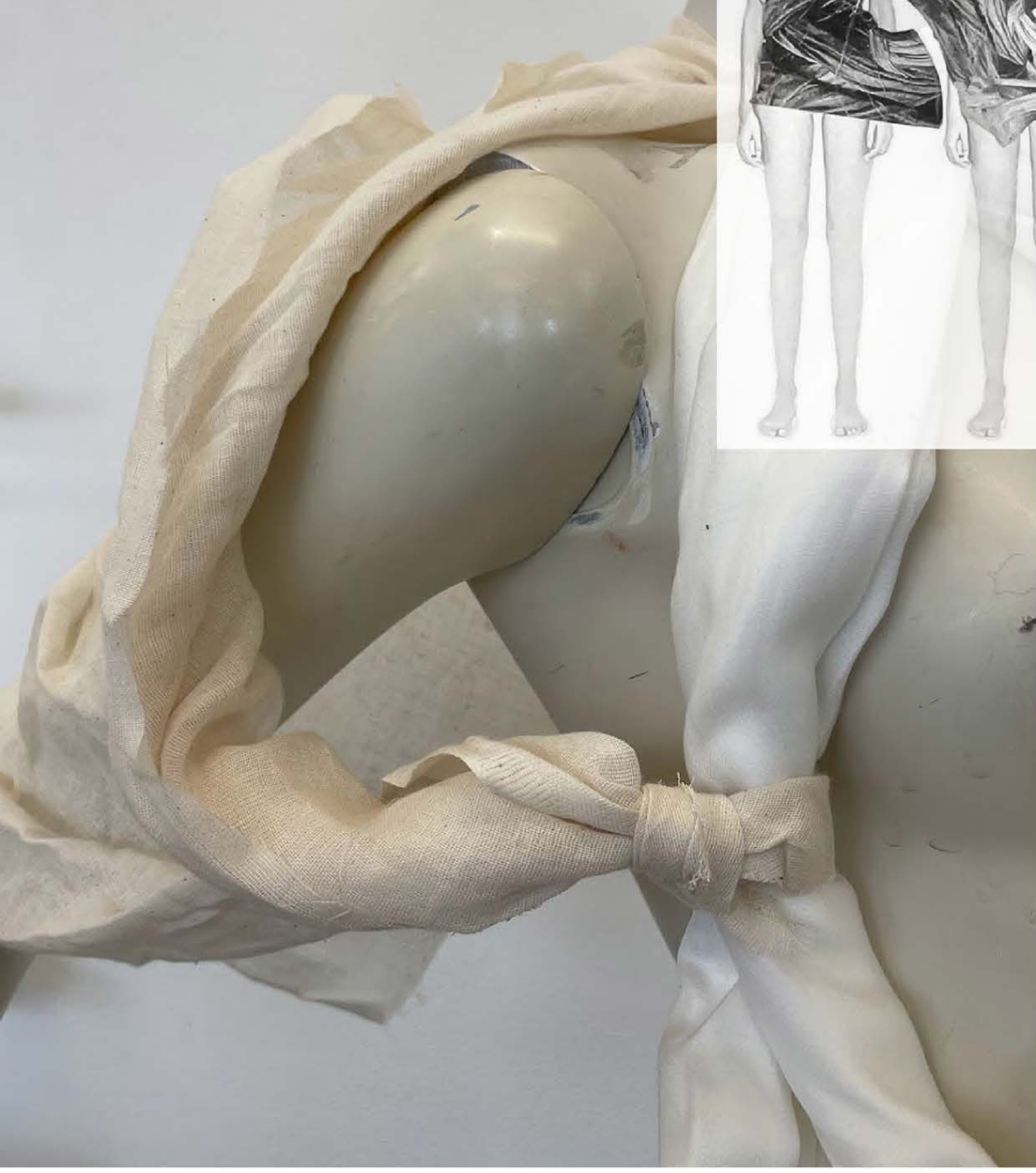
colour & fabric



- raffia
- cotton gauze
- bamboo silk
- crinkled cotton
- scoured cotton
- crinkled gauze
- recycled sari silk ribbon
- modal satin
- crinkled silk

SECTION 8

design development



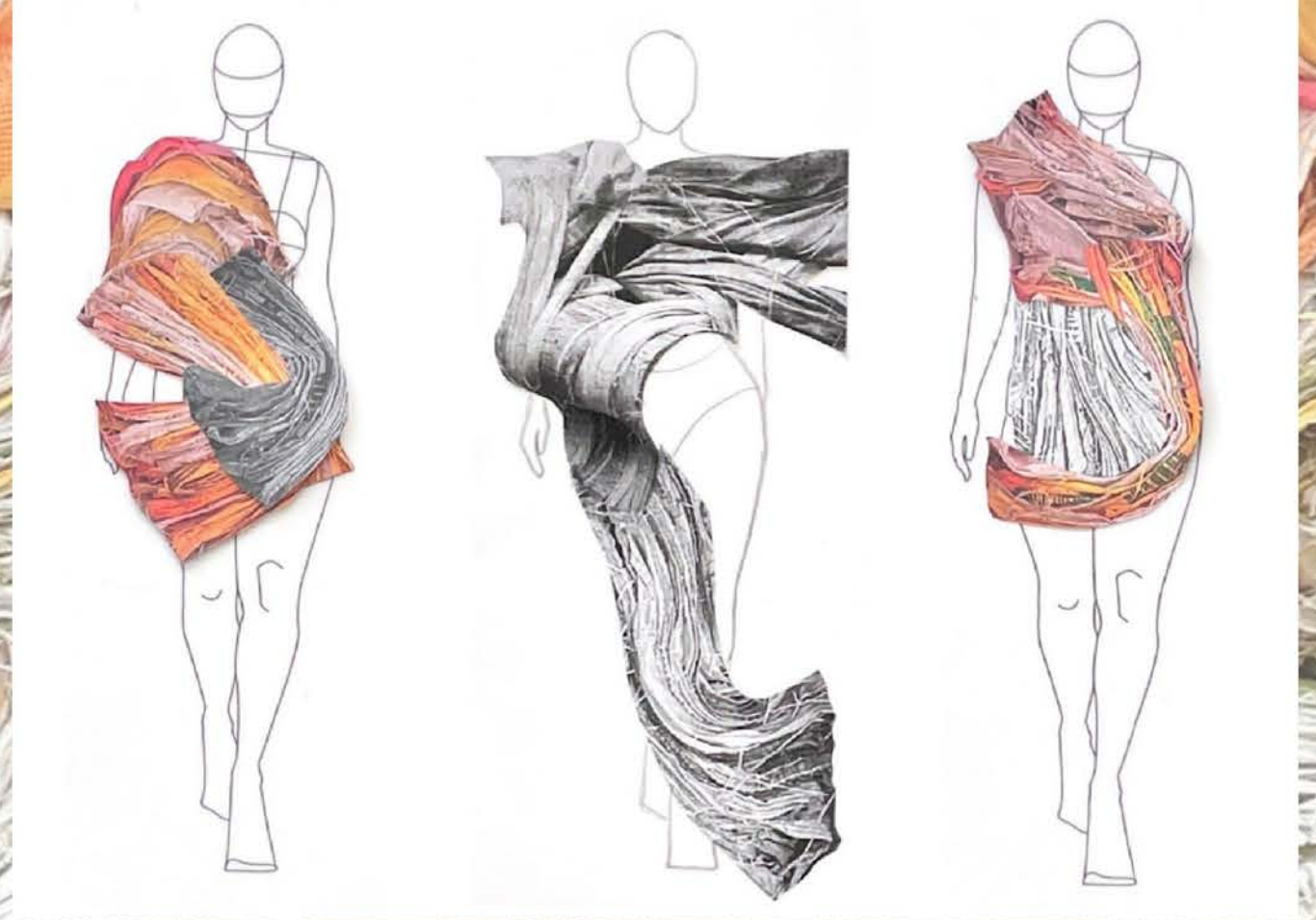
design development

spring summer '23



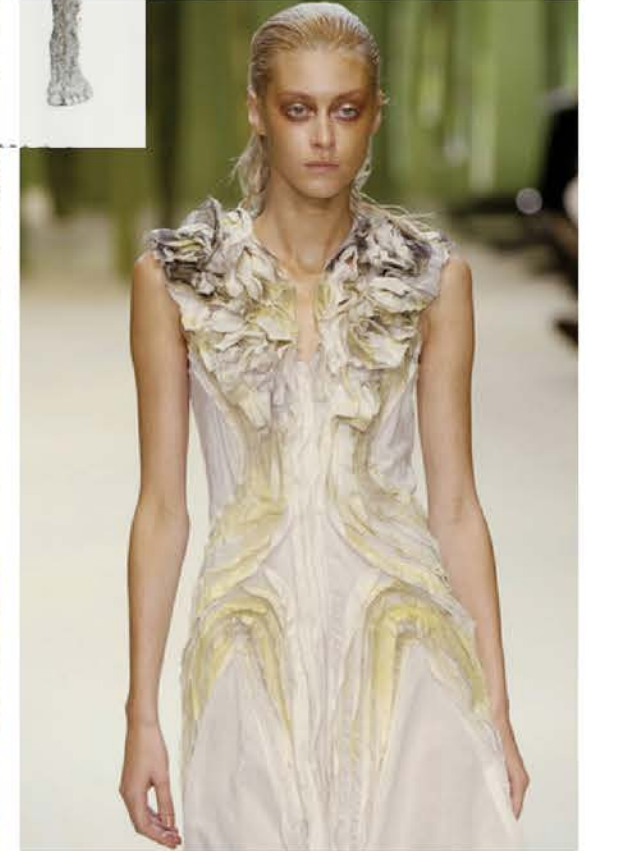
design development

spring summer '23



design development

spring summer '23

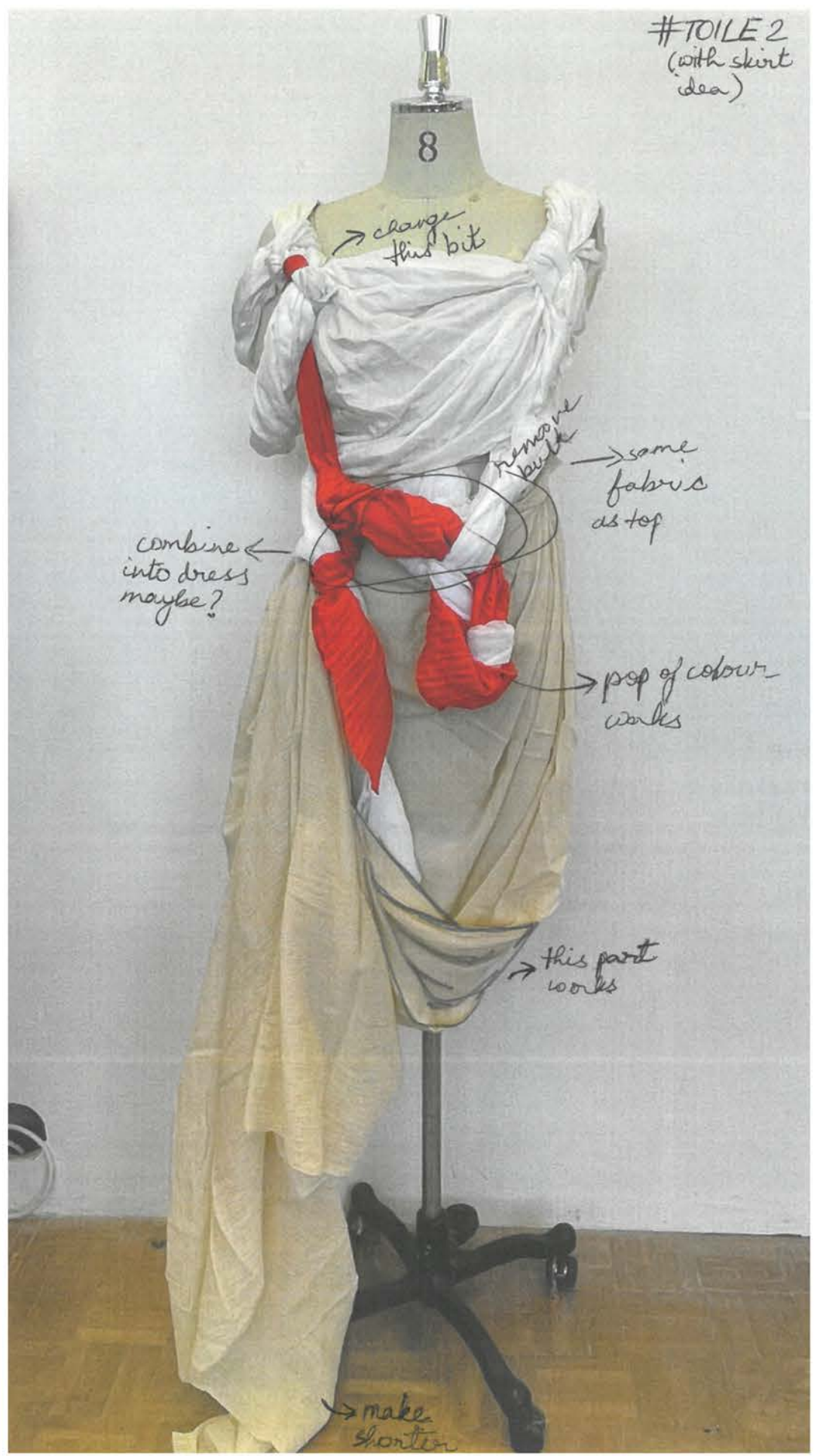


design development

spring summer '23



look 1 development



TOILE 2

FEB 2023



- changes to do:
- join top + skirt to make dress
 - make knots on left side simpler
 - modify underlayer
 - look into crinkling silk like toile fabric

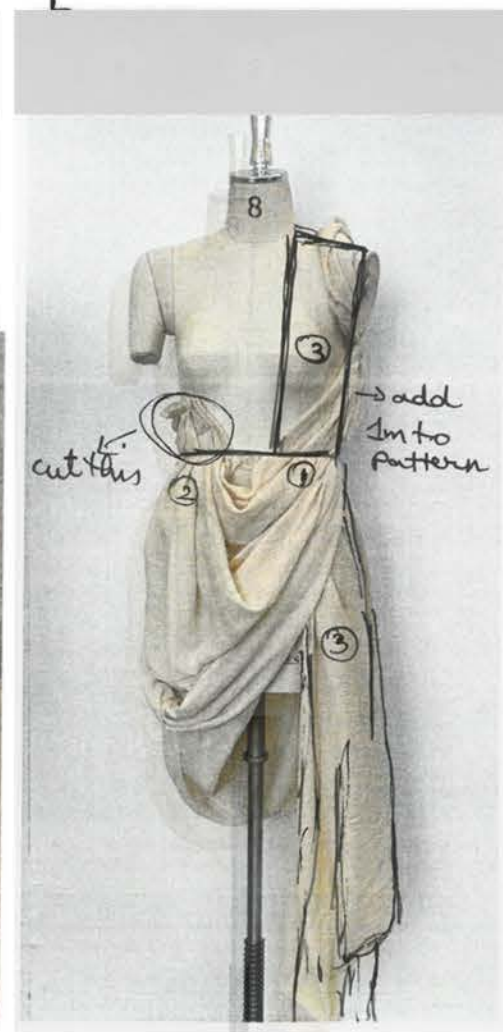
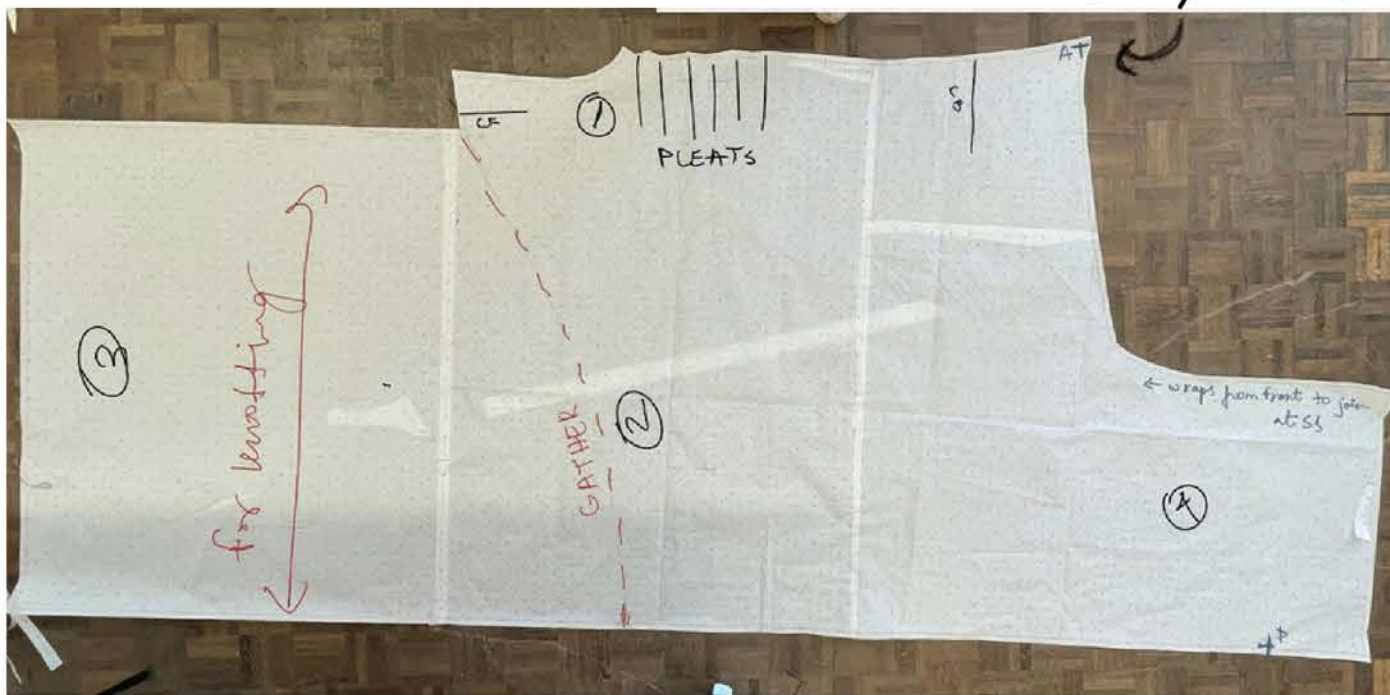
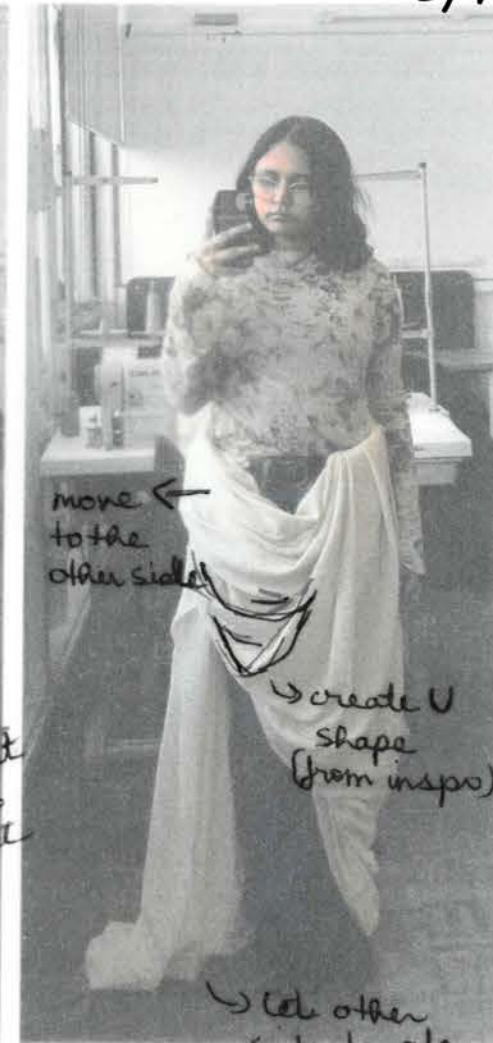
too many knots, make fuller rather than more ombre, dyed in one colour?

look 1 development

spring summer '23



skirt pattern



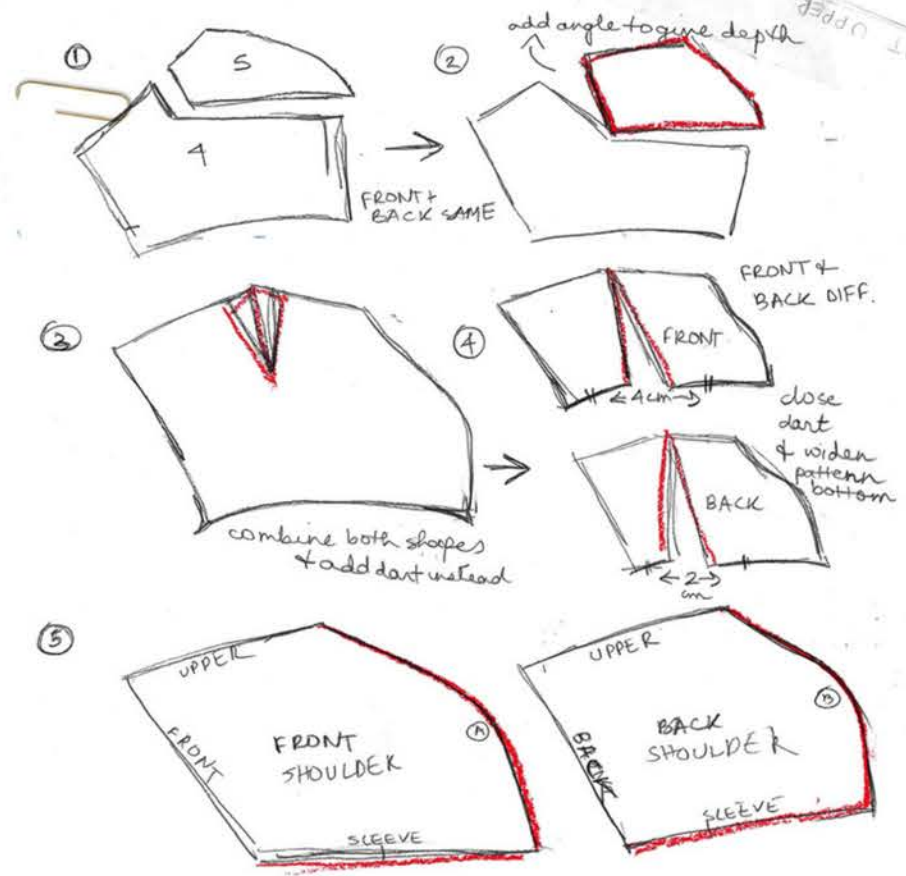
look 2 development



#final feedback
 -change shoulder and sleeve to fit better
 -make collar more graphic
 -amend the back to remove point
 -have the textile with mismatched colours

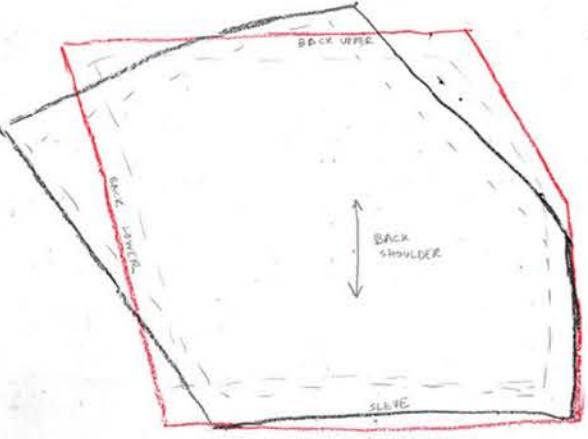
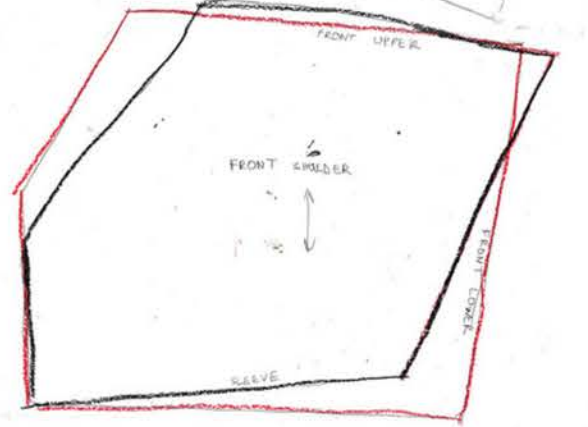


PATTERN CHANGES



- make sleeve seam less curved
 - A + B in LR. - one

- new pattern
 - old pattern

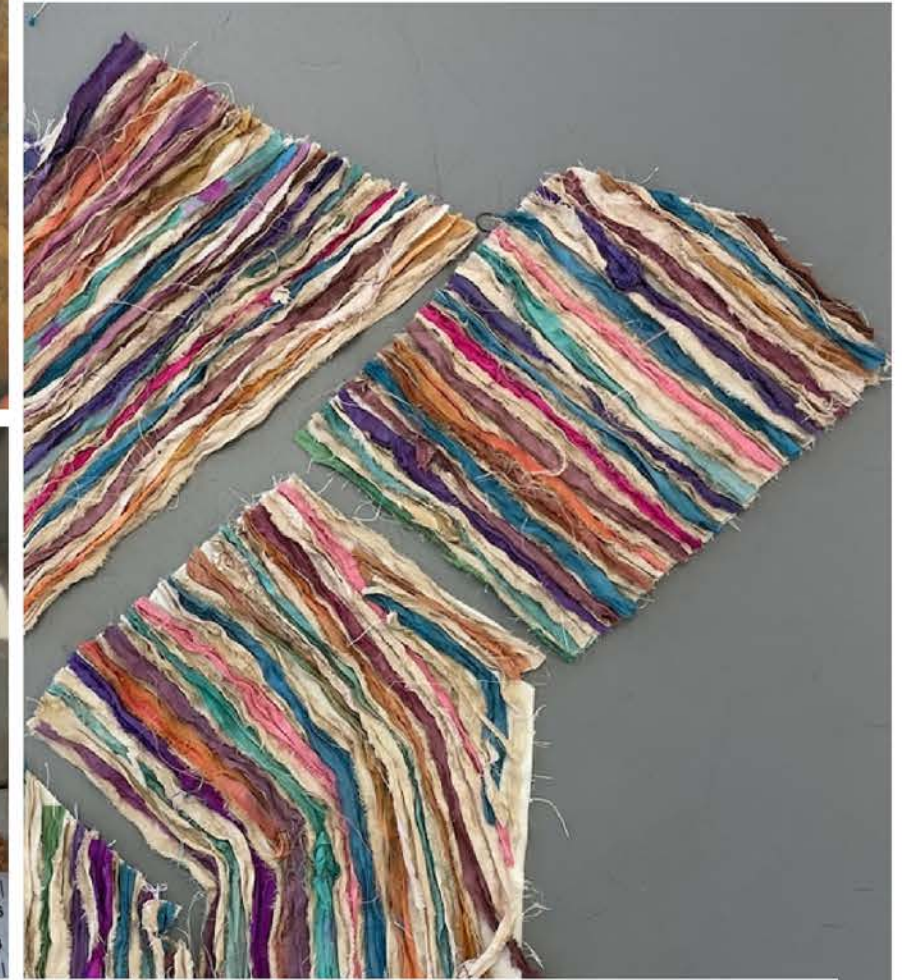


TOILE 2



look 2 development

spring summer '23



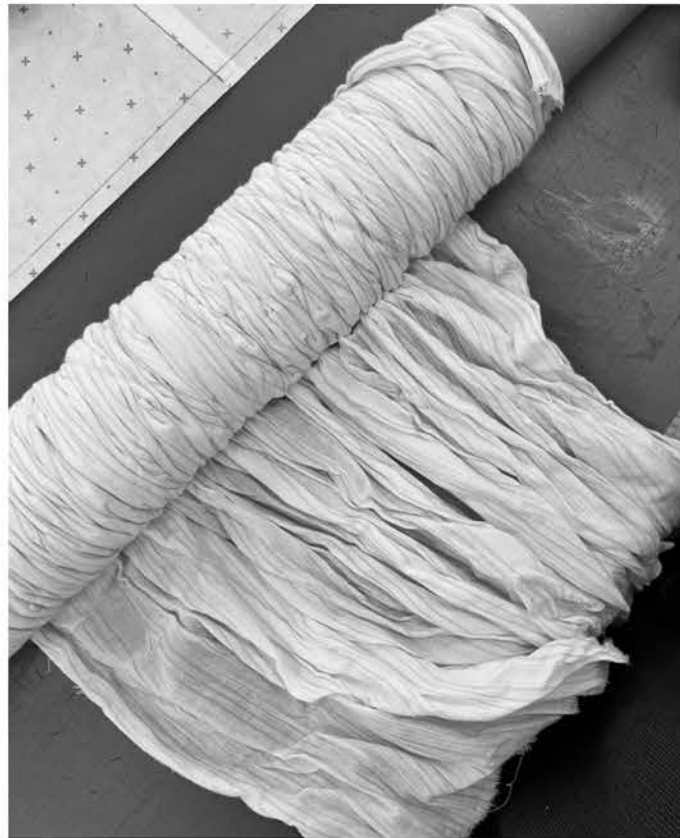
textile development

spring summer '23

crinkling fabric for look 1 and 3

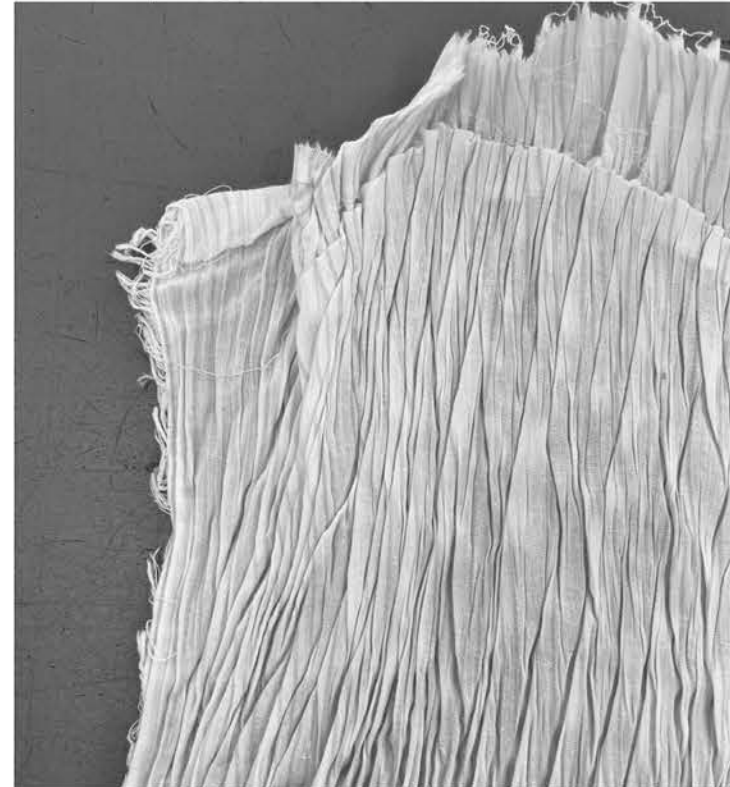


Add a little bit of body text
Add a little bit of body text
Add a



Add a little bit of body text
Add a little bit of body text
Add a little bit of body text
Add a little bit of body text
Add a

Add a little bit of body text
Add a little bit of body text
Add a little bit of body text
Add a little bit of body text
Add a little bit of body text
Add a little bit of body text



imperfection
existence

Add a little bit of body text
Add a little bit of body text
Add a little bit of body text
Add a little bit of body text
Add a little bit of body text
Add a little bit of body text



Add a little bit of body text
Add a little bit of body text
Add a little bit of body text



look 3 development



③ COLOUR REFERENCE

look 3 development

spring summer '23



3:32 $\frac{34}{250} \times 4 = 0.54$
 105 $0.54 = 0$
 ml V. 14
 m Bl $0.07 \times 4 =$
 f ml $0.07 \times 10 = 0$

strength colours or black 7 for full strength

covered and can move freely under water.

or DIRECT dye

$\frac{0.34}{100} \times 4 = 1.36g$

Yellow FRD.

4ml.

Violet 5ml

Black 2ml

Red. ~~3ml~~

0.32g

0.22g

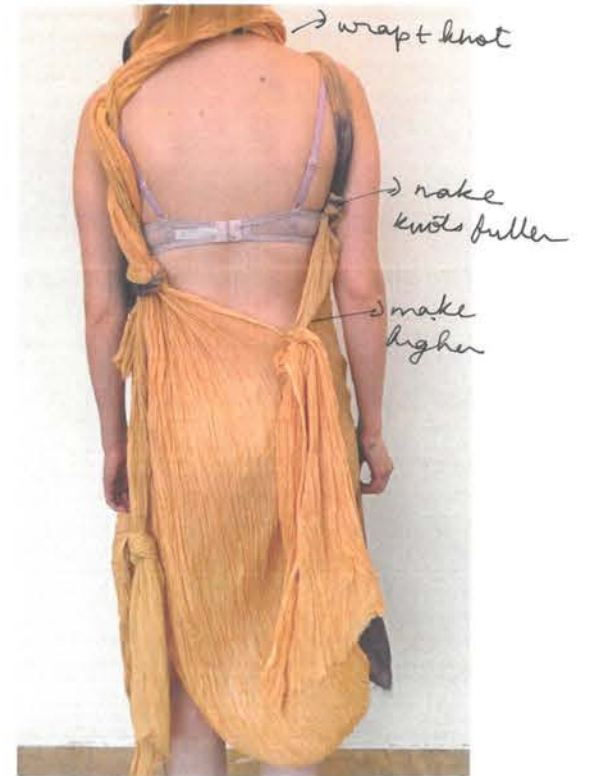
0.09g

~~0.46g~~ 0.13

$y = 0.54$
 $v = 0.083$
 $b = 0.03$
 $r = 0.103$

$y = 0.527g$
 $v = 0.085g$
 $b = 0.034g$
 $r = 0.103g$

final toile



imperfection
existence

look 4 development

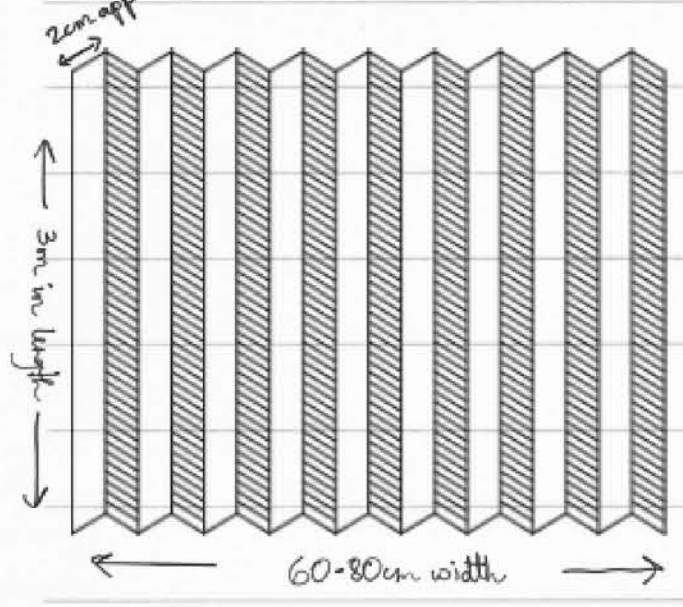


pleating and silk paint using Pebeo Setasilk paints (45 ml)

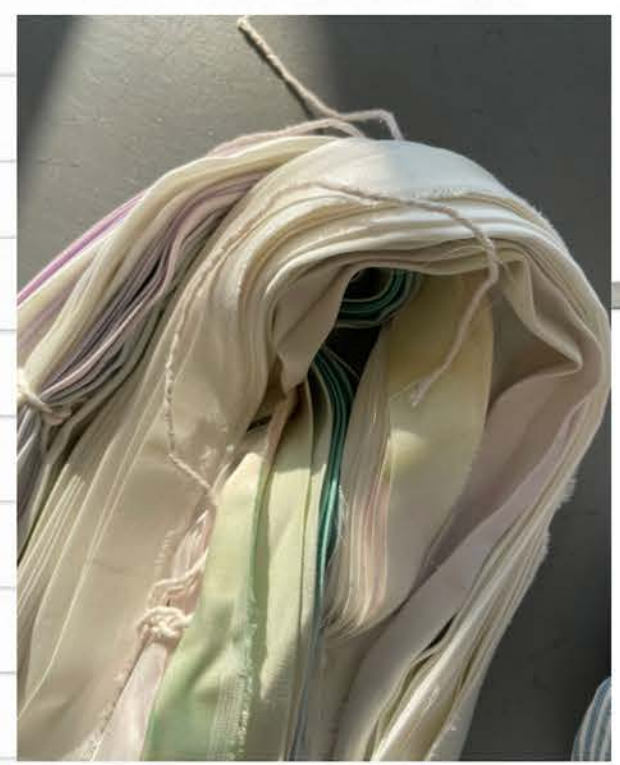
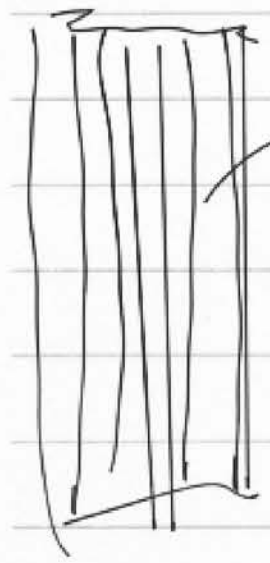


toile 1

pleat ratio and style



4 strips in total pleated and ready before draping



TOILE 2



- front looks too strained & complicated
- drape more organically
- use a thinner strip for the neck bits

- back works better
- like the 'U' loop
- don't cut underlays to fit the shape



final strips used



styling board

crinkle silk



raffia



using leftover fabric to wrap around foot and shoe



final lineup

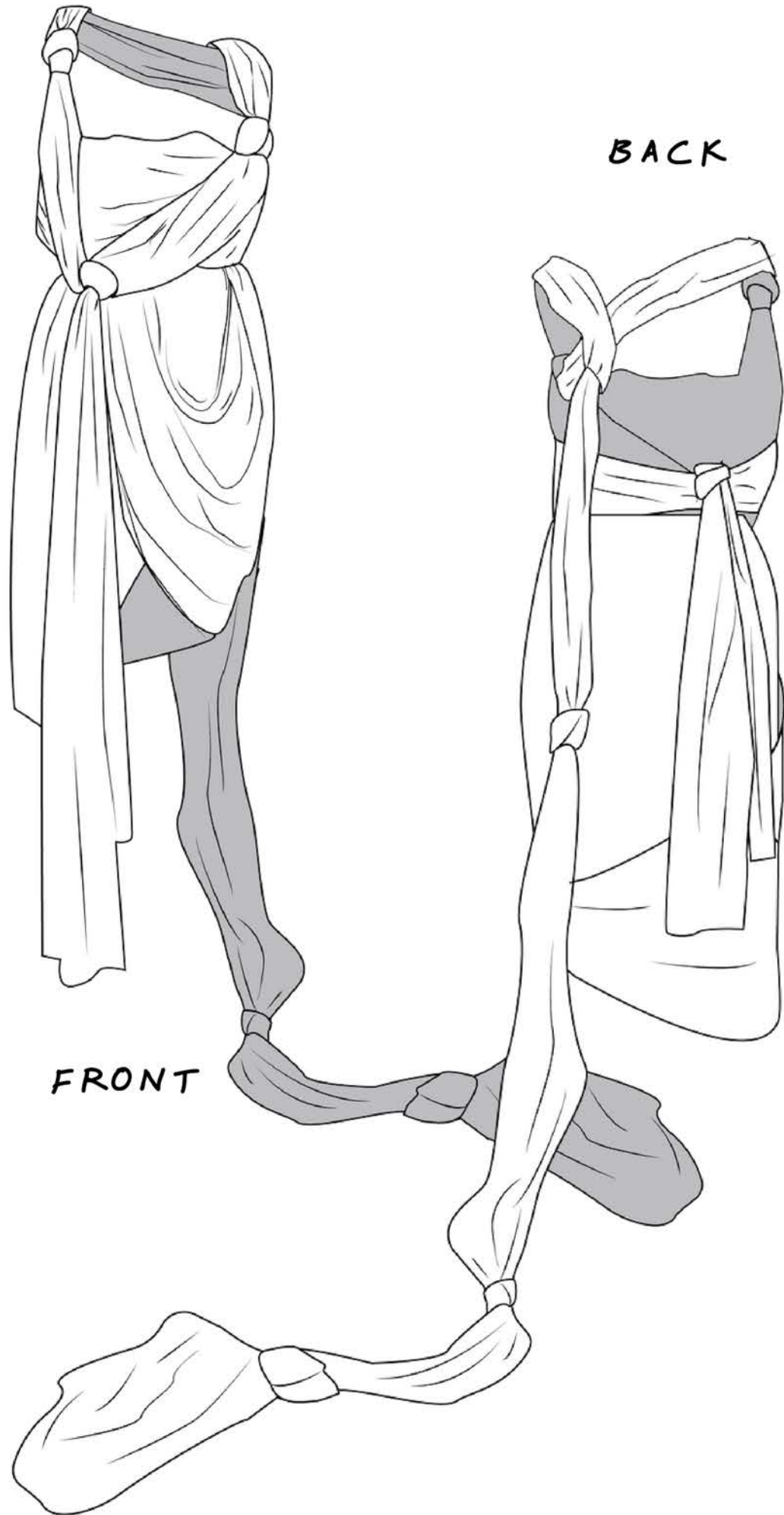
spring summer '23

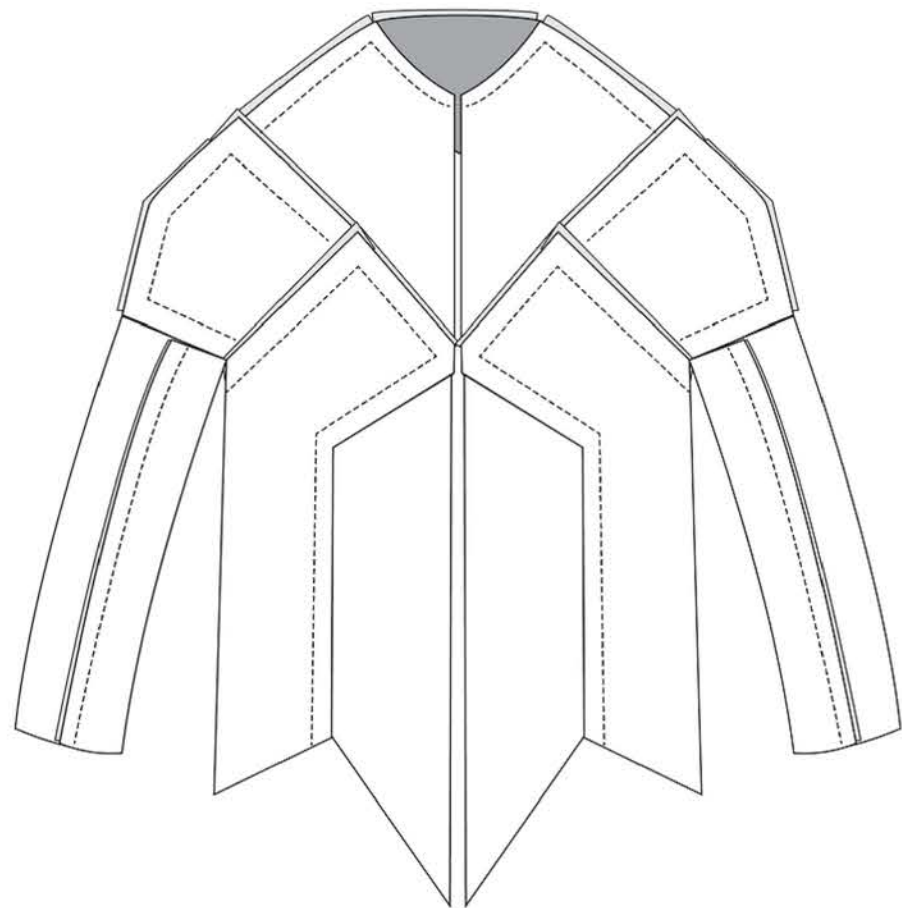


photographic lineup

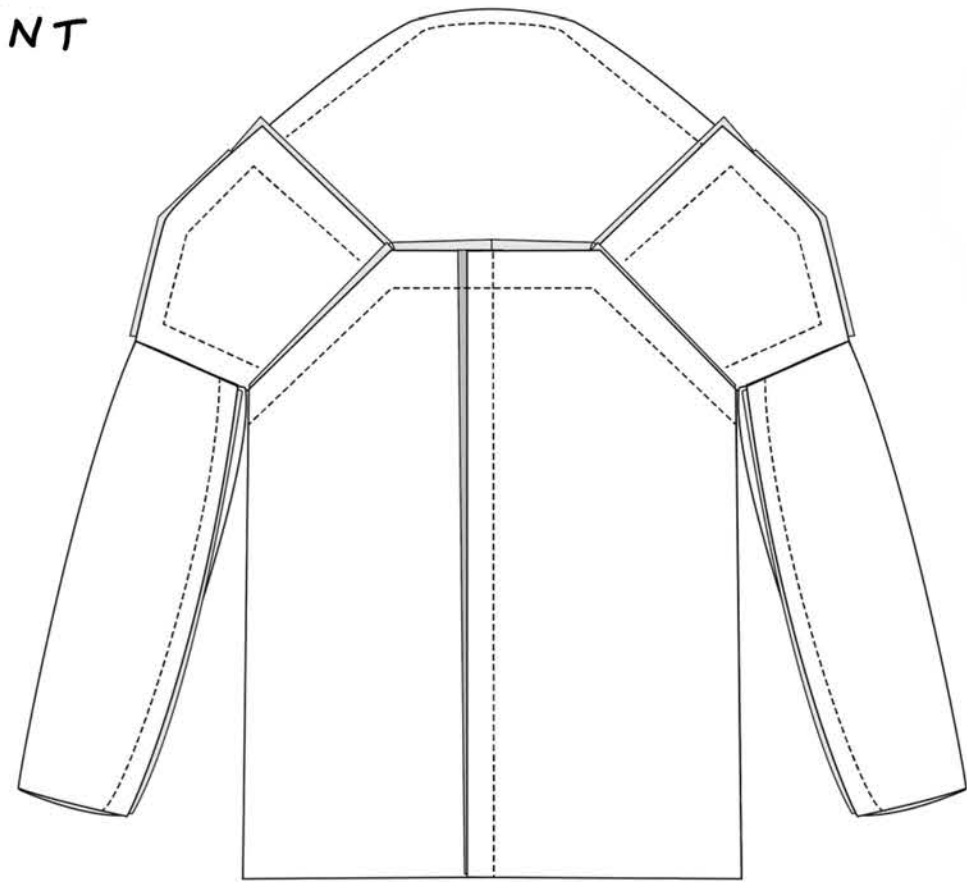
spring summer '23





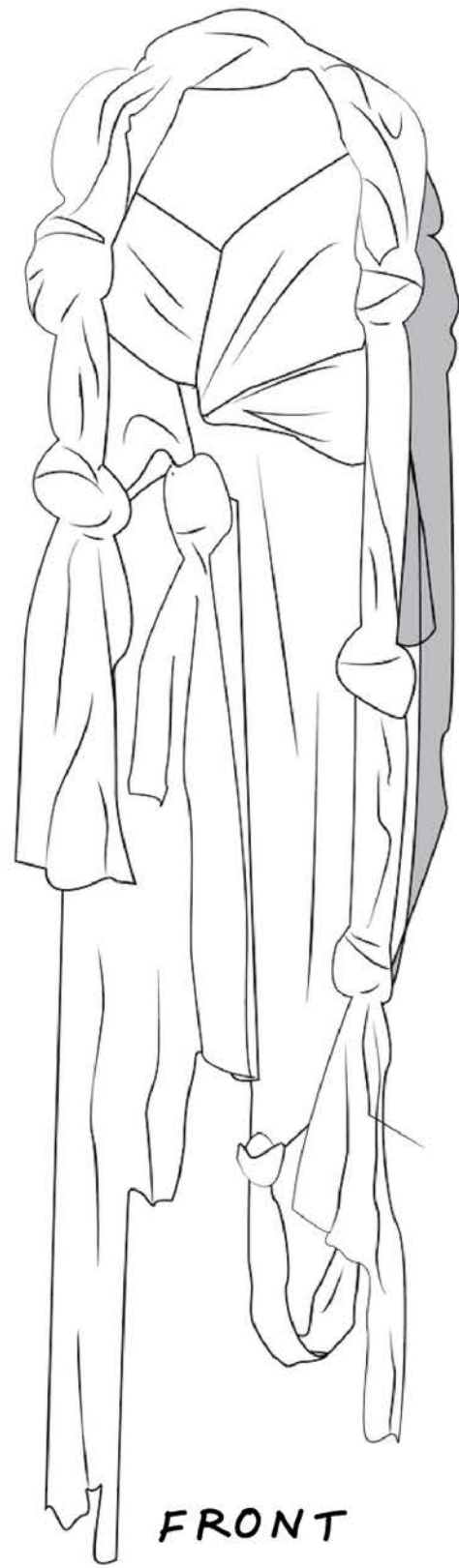


FRONT



BACK





BACK





FRONT



BACK



lookbook



spring summer '23



lookbook



spring summer '23



lookbook



spring summer '23





"Monotsukuri"

Japanese term referring to the art of making and craftsmanship

part of 'The Solemn Project' exhibition by Ana Lupus



bamboo scaffolding tied with cloth
Photograph by woc



Issey Miyake
Spring 2006





final lineup

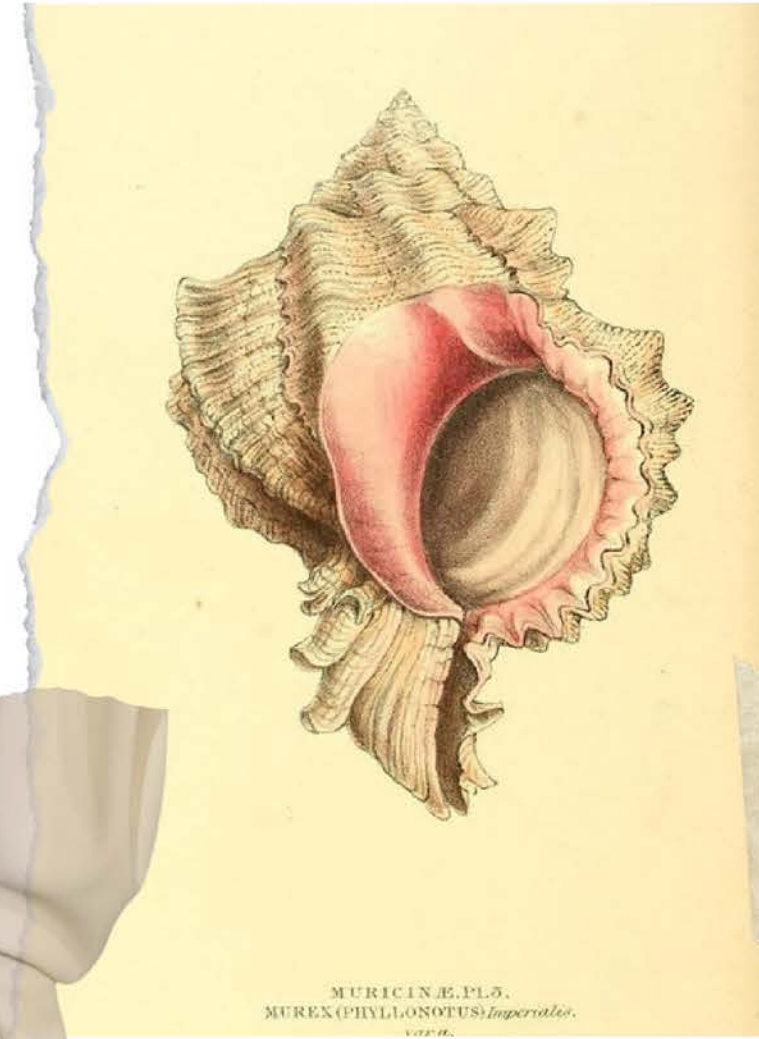
spring summer '24



Monotsukuri



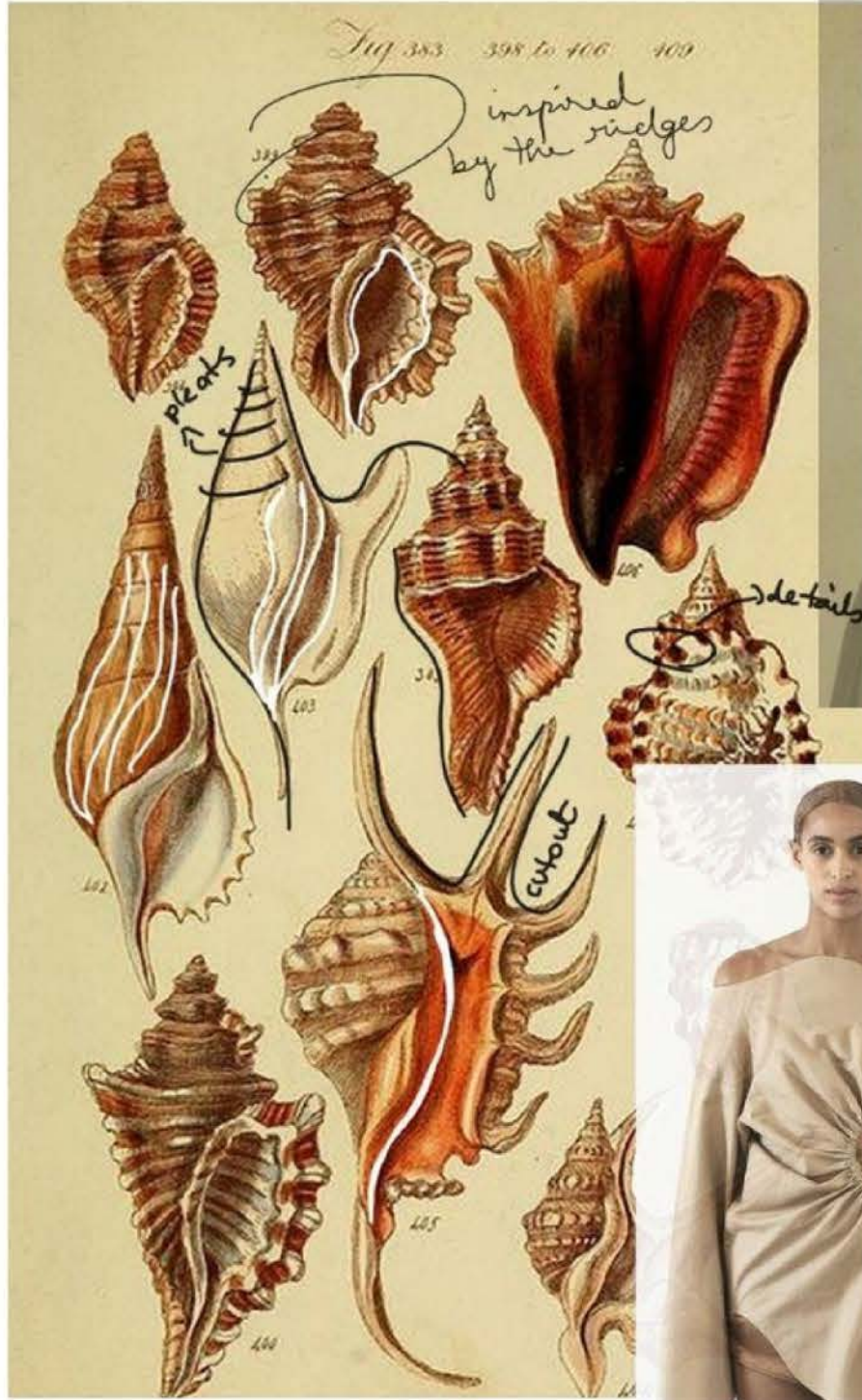
"The conch shell industry is getting sparse day by day in West Bengal with the skillful artisans finding it difficult to find work. They have excellent skills and have been honing them for years."



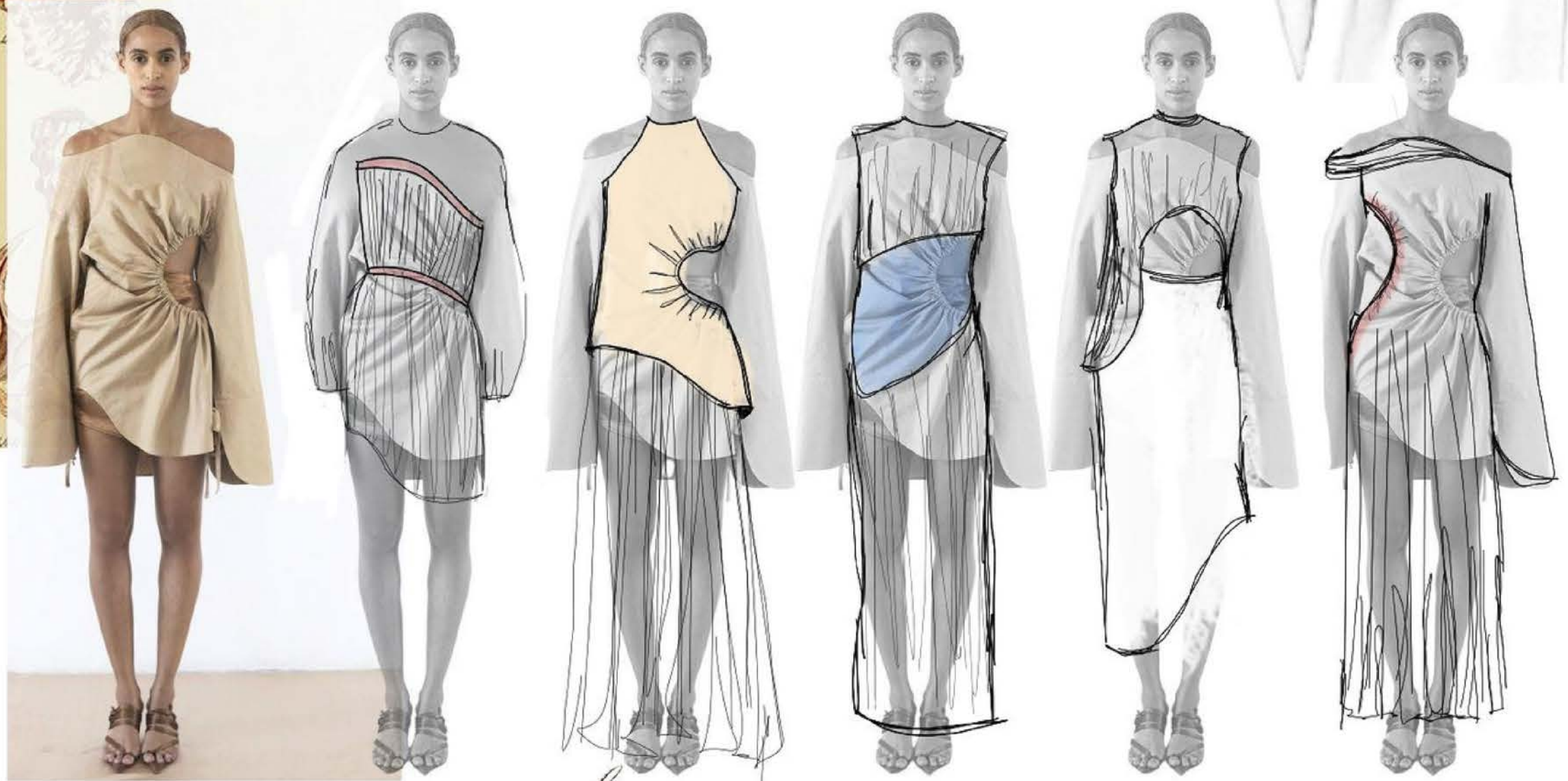
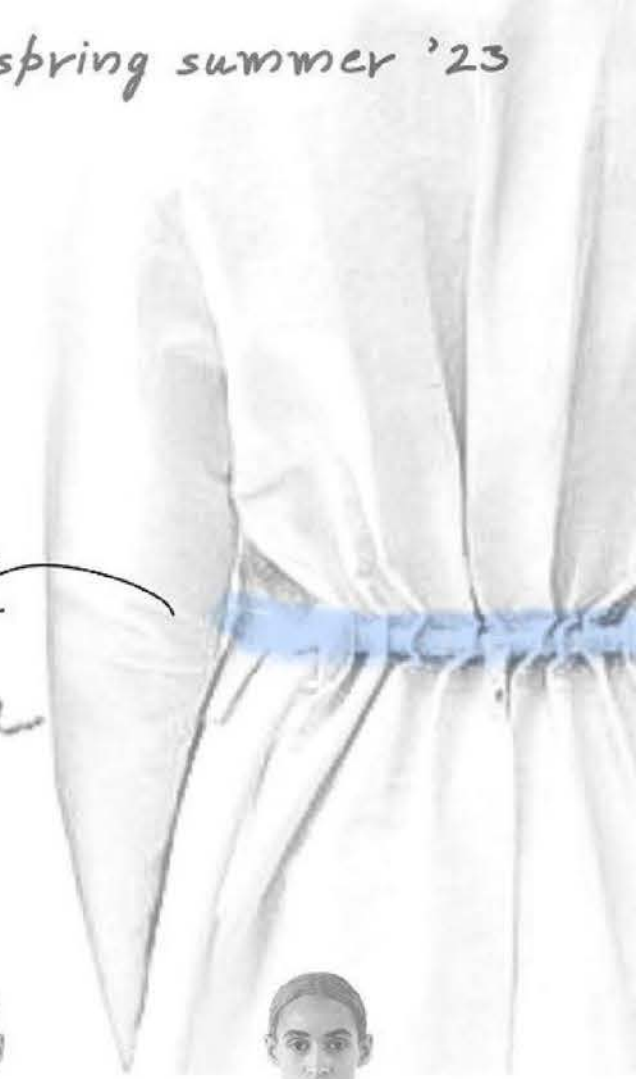
the
conch
story

design development

spring summer '23



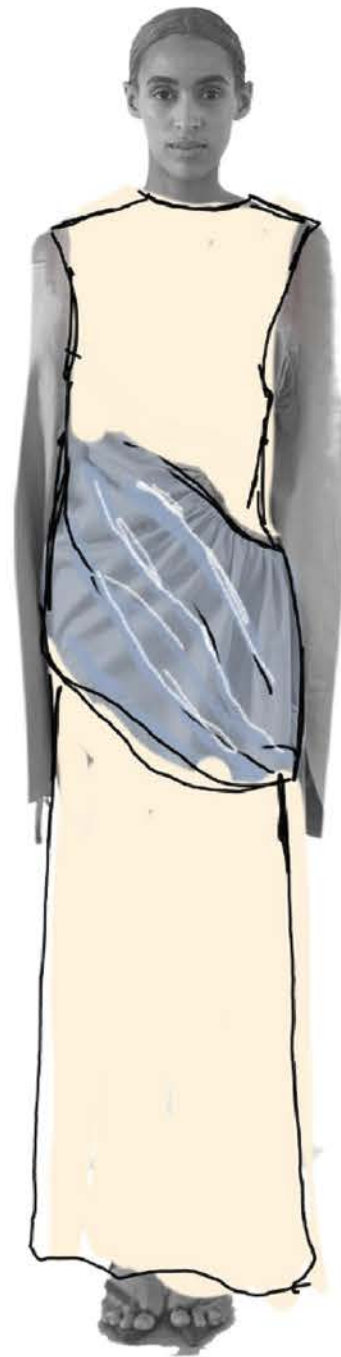
using colour in the details



conch story

final lineup

spring summer '23



conch
story