

S

STELLA DARROUX

*Portfolio*

# Femme Fatale

noun

An attractive woman, esp one who disastrously involves a man in a crime. Synonyms: temptress, seductress, etc....





*Smoking*



*Shot*



*Playing with fire*



**ALLUMEUSE:**

(CF: A TEASE)

A girl who looks good and knows guys want her but only plays with their mind. She runs in your mind all day long, a dangerous woman who won't let you go far. Uses sex appeal to manipulate poor helpless men into doing what she wants. May cause death.



*Allumeuse*



*Gun anatomy*

*Tailoring*

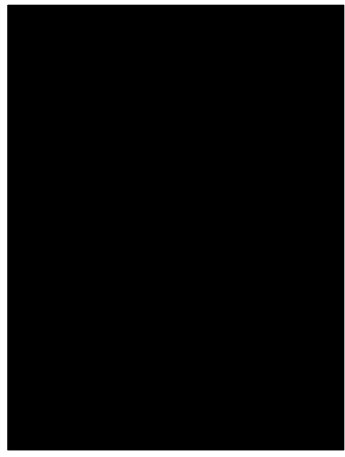
*Sliced*

*1940s collar*

*Textures*

*1940s Fashion*





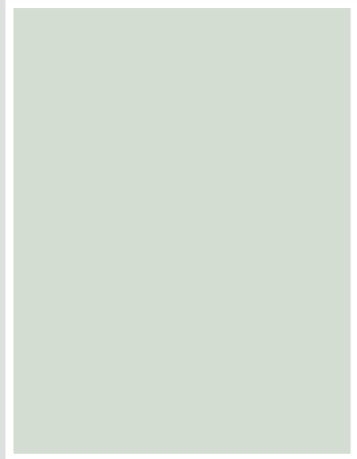
#000000

*Black*



#6E717D

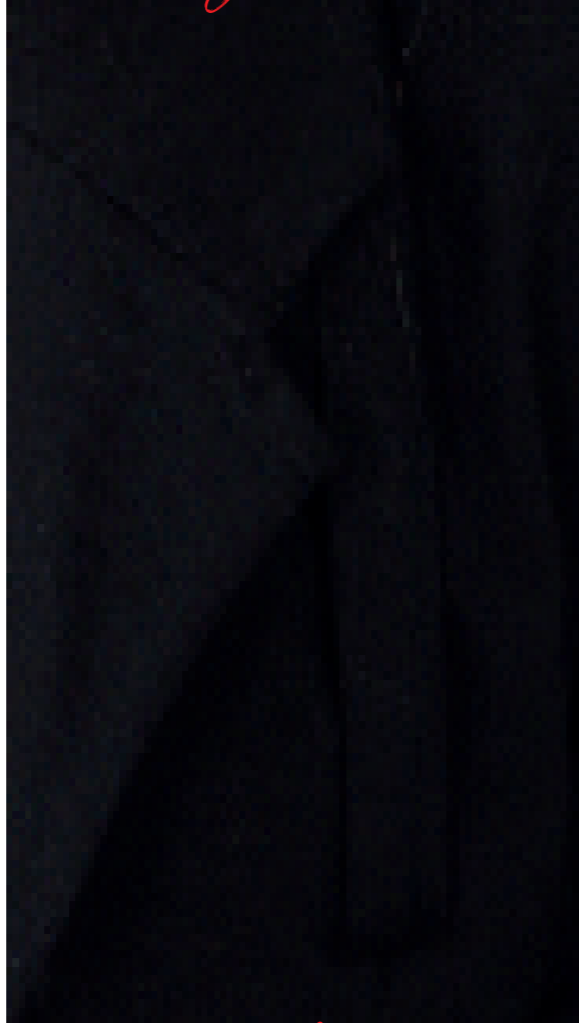
*Storm Grey*



#DFE3D8

*Silver*

*Tailoring wool*



*Patent leather*



*Melted plastic*



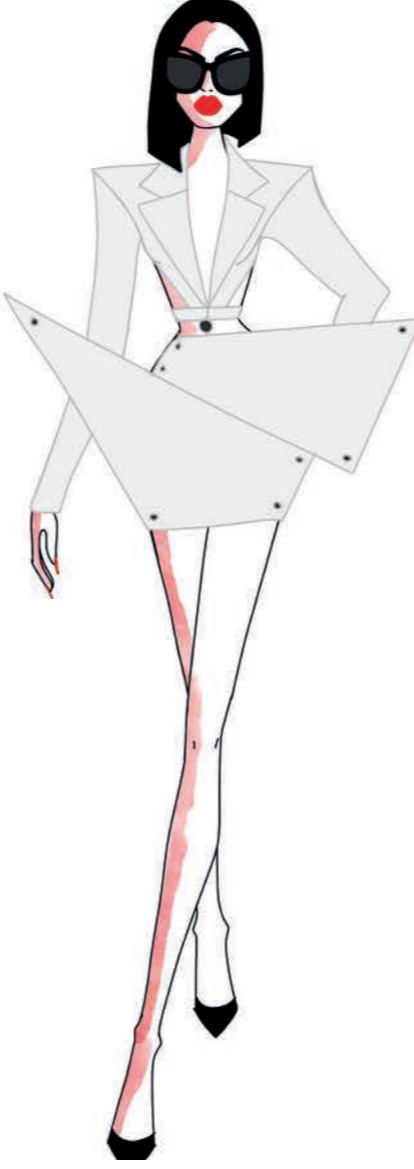
*Painted tailoring wool*



*Tailoring wool*

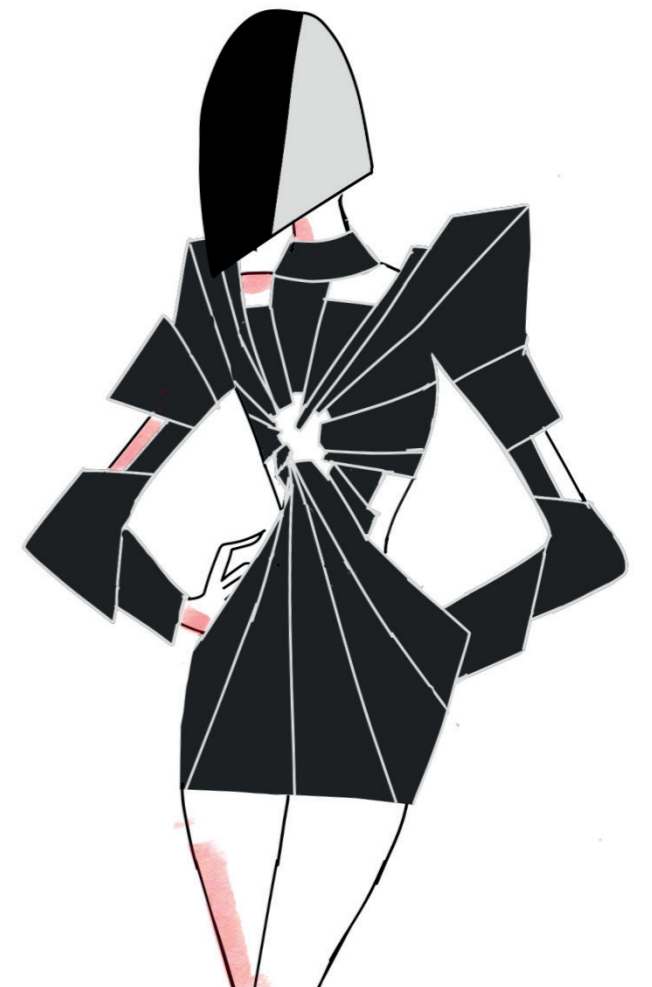
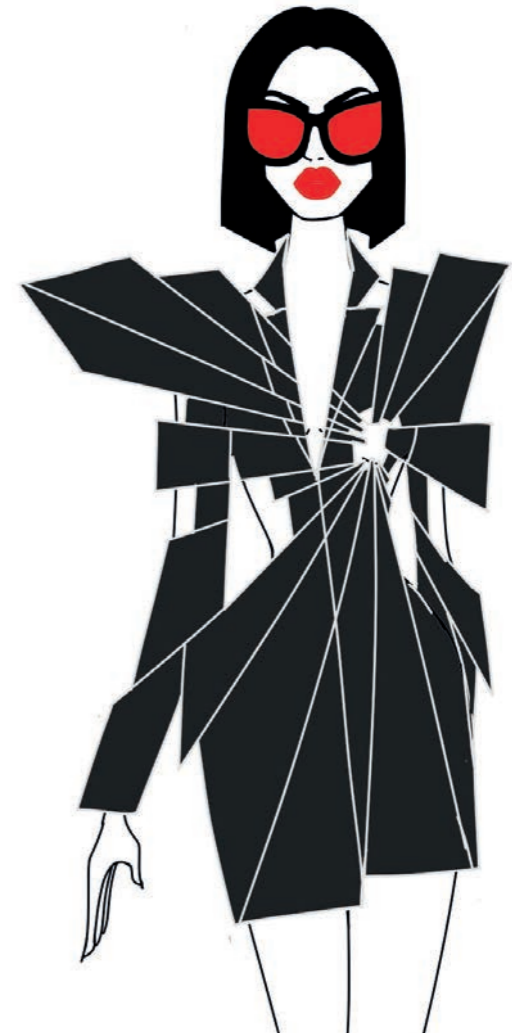
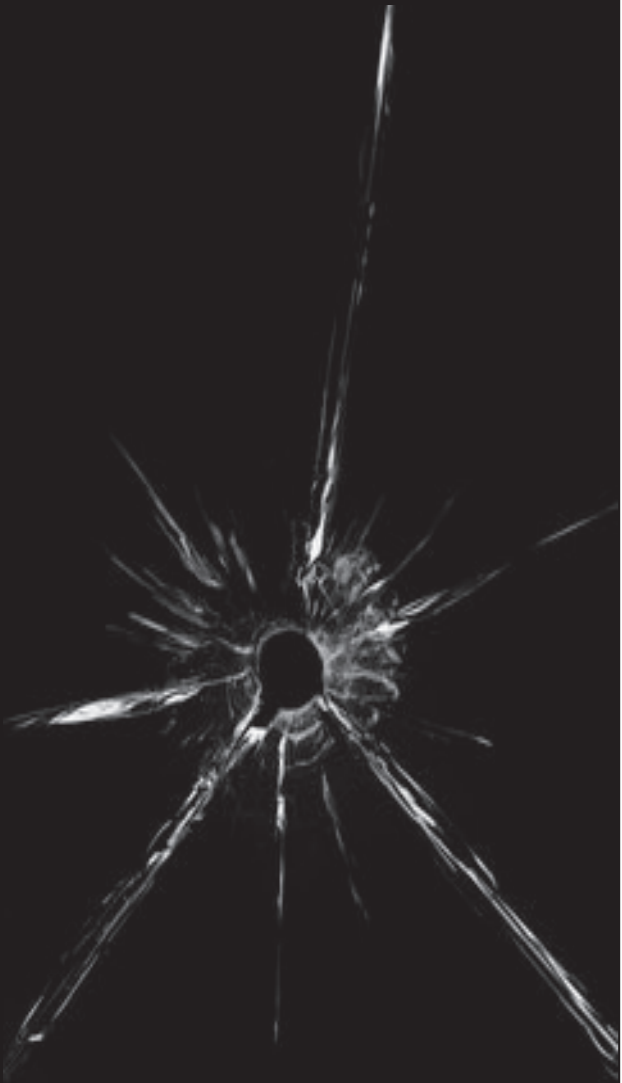


# Shape Research

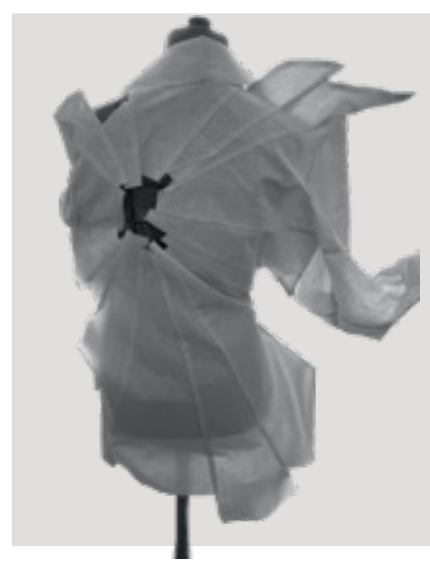
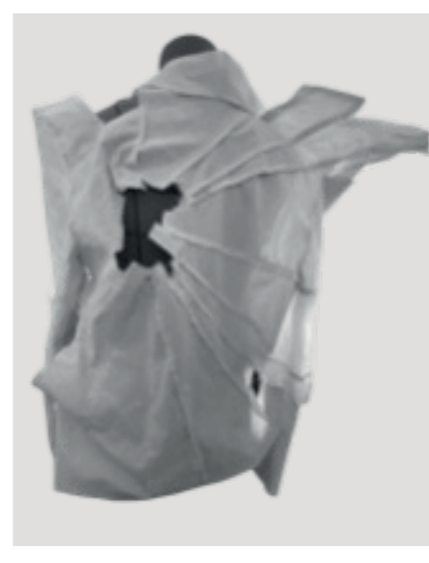




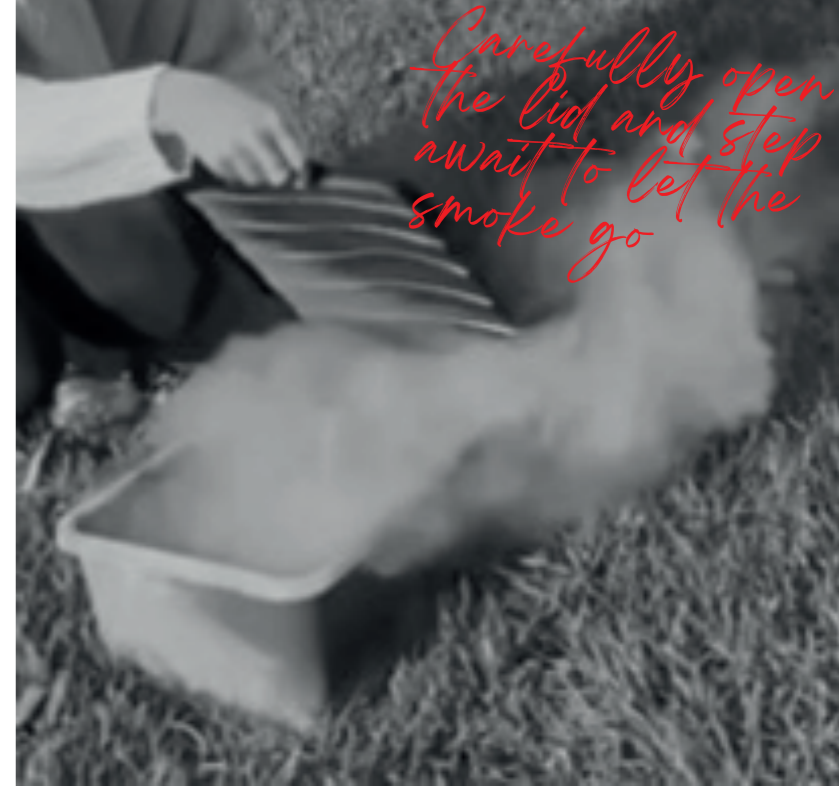
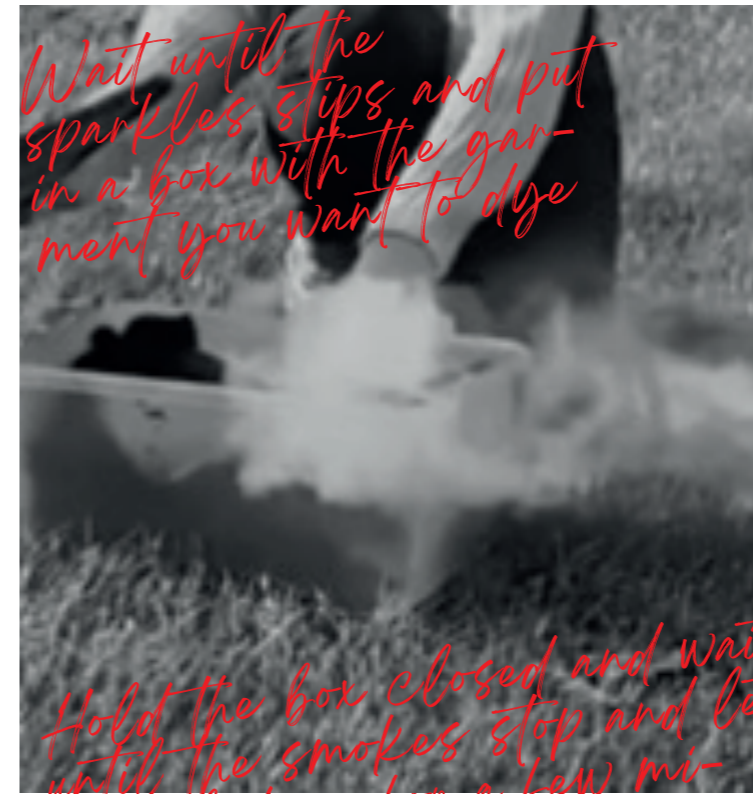
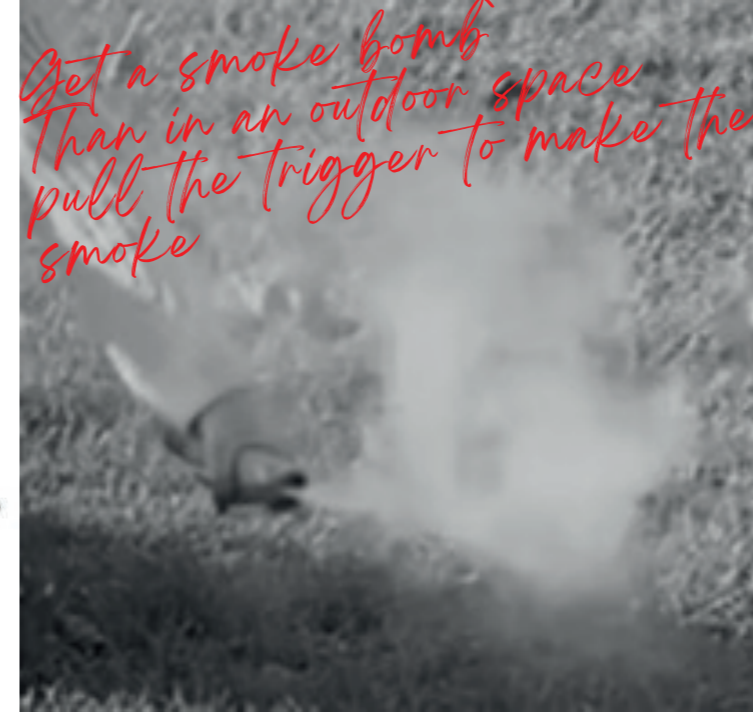
# Shot Jacket







# Smoking Suit



Get a smoke bomb  
than in an outdoor space  
pull the trigger to make the  
smoke

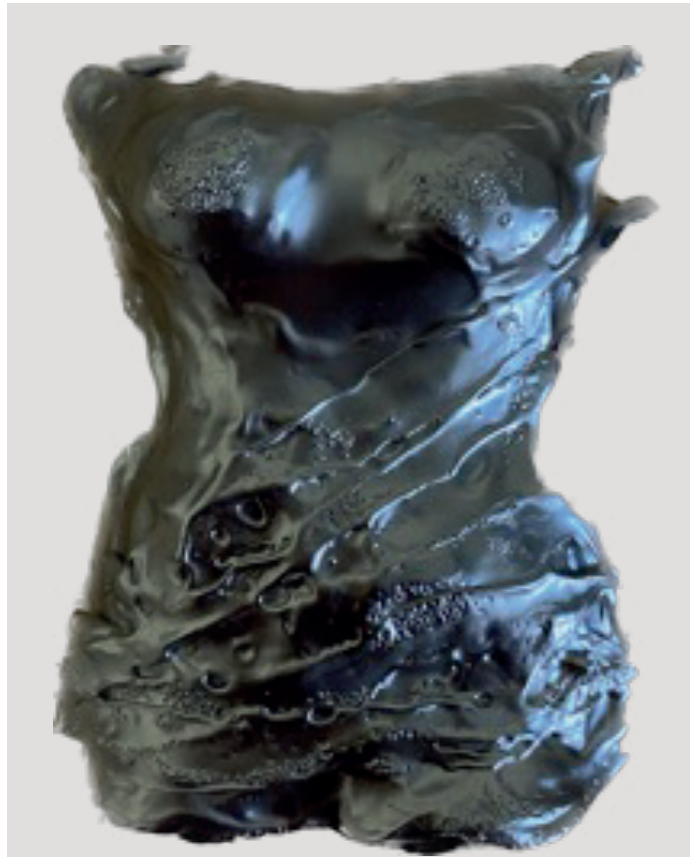
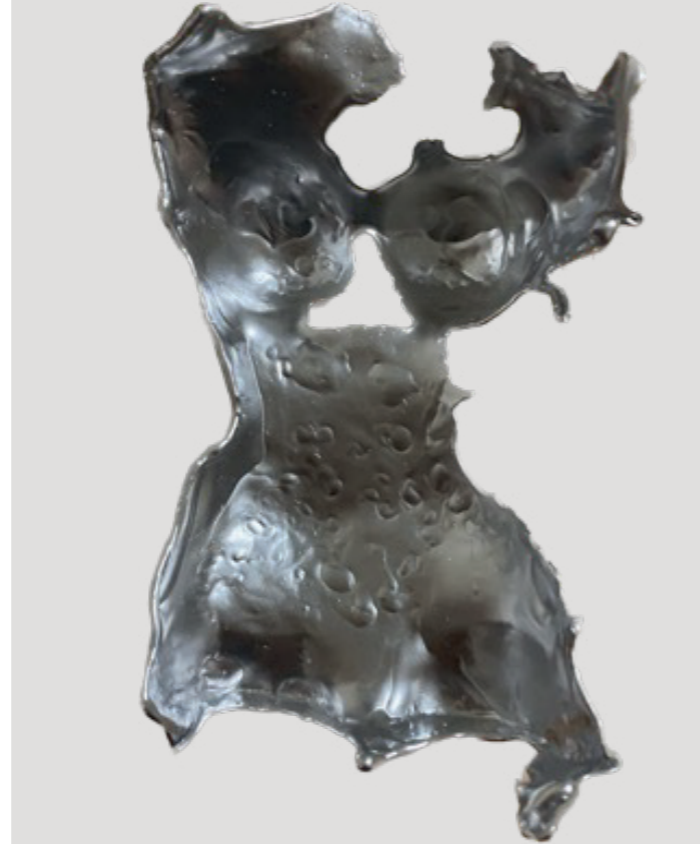
Wait until the  
sparkles stop and put  
in a box with the gar-  
ment you want to dye

Hold the box closed and wait  
until the smokes stop and let  
it cool down for a few mi-  
nutes

Carefully open  
the lid and step  
away to let the  
smoke go

Finally take off the  
clothe from the box

*Melted dress*

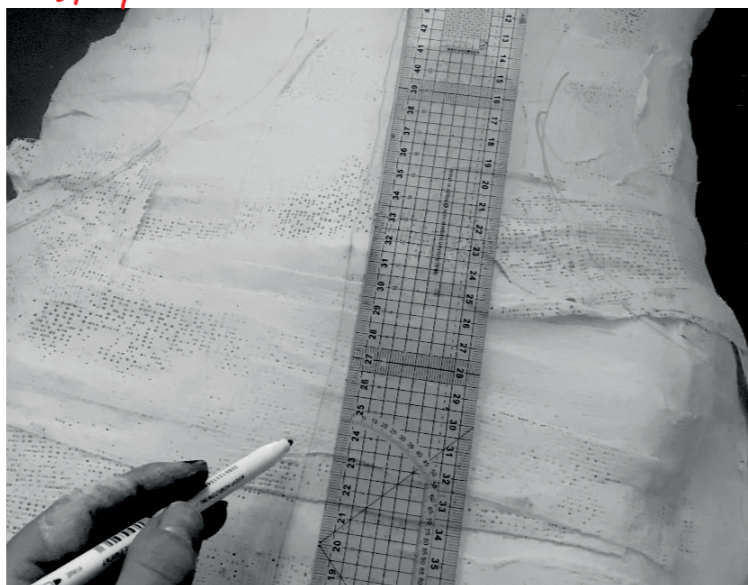


# Process

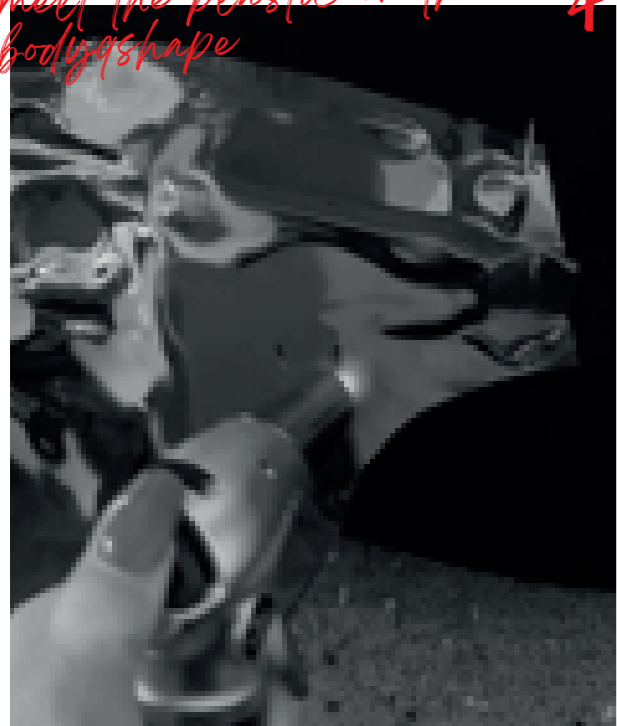
1 Cast the model's body to use as a dummy



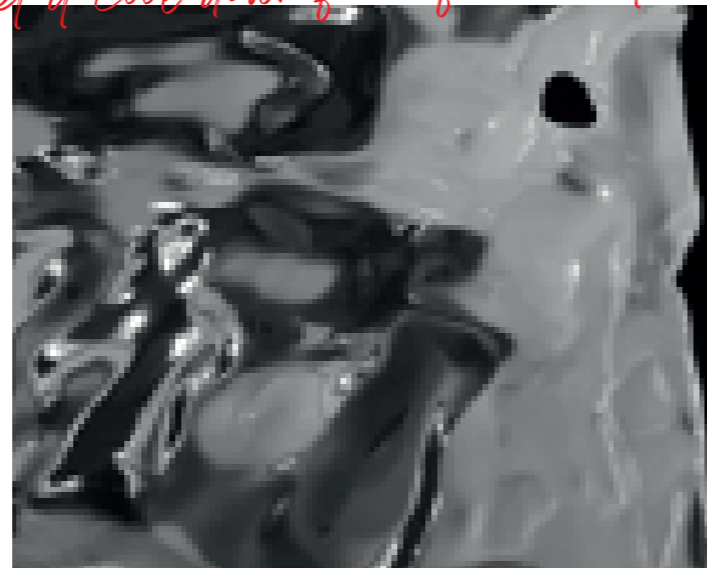
2 Trace and cut the pieces to get an idea of the shape



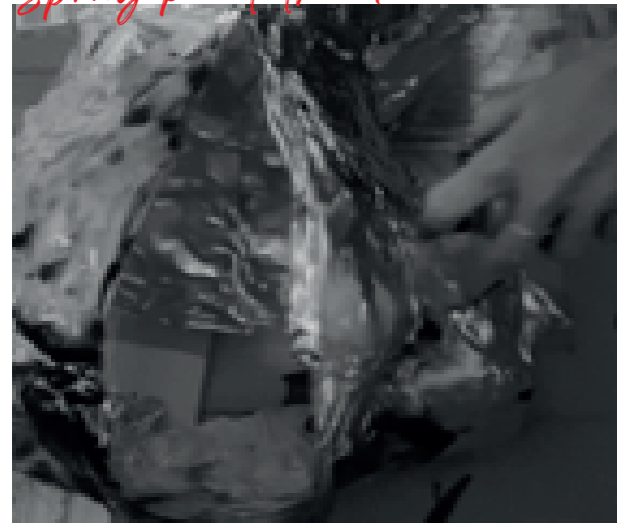
3 Using a blowtorch melt the plastic on the body's shape



4 Let it cool down for a few minutes



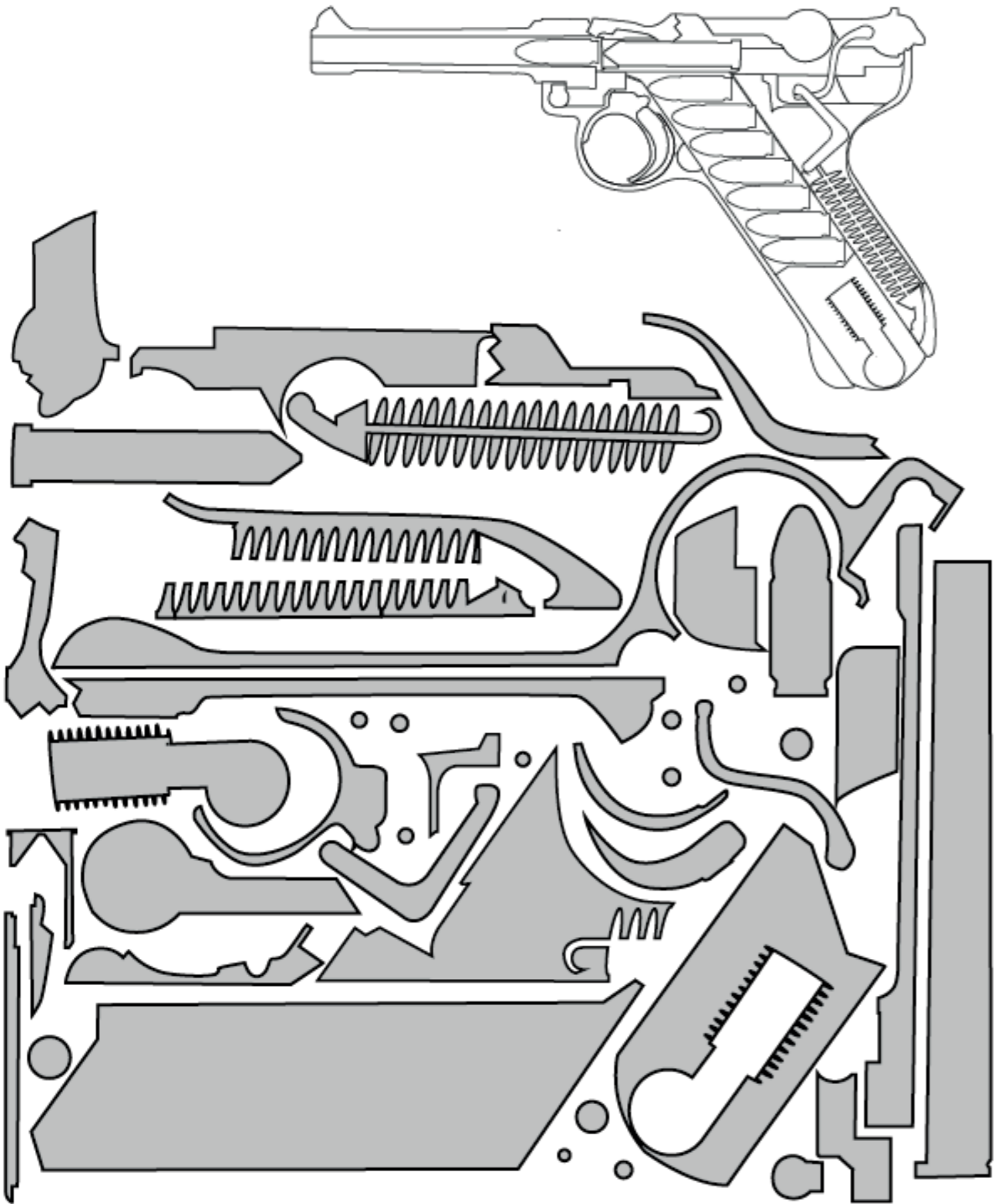
5 Spray paint the dress

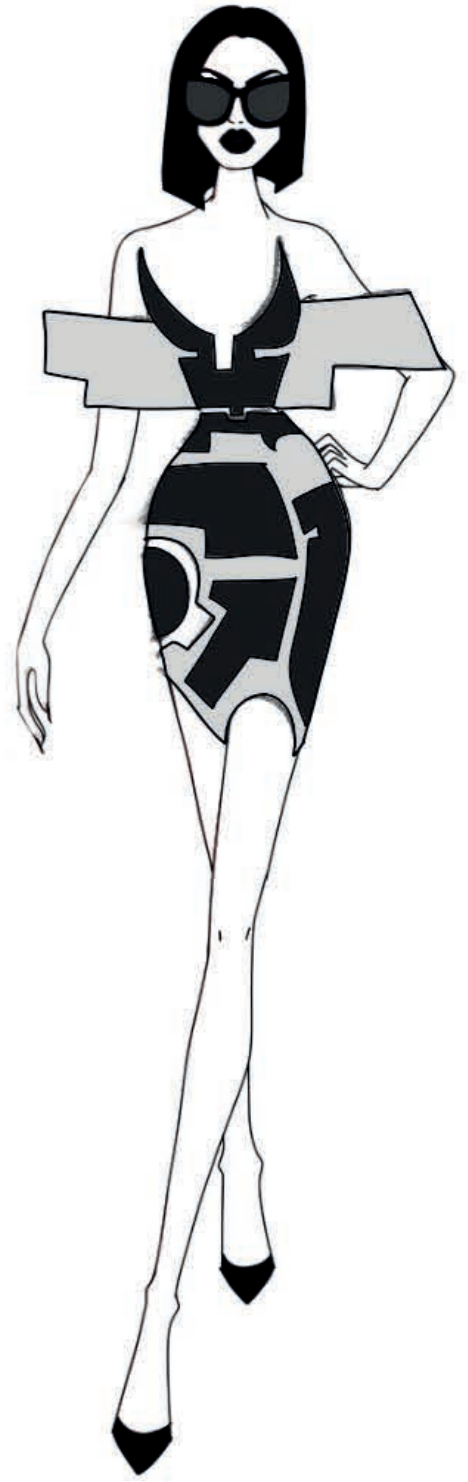
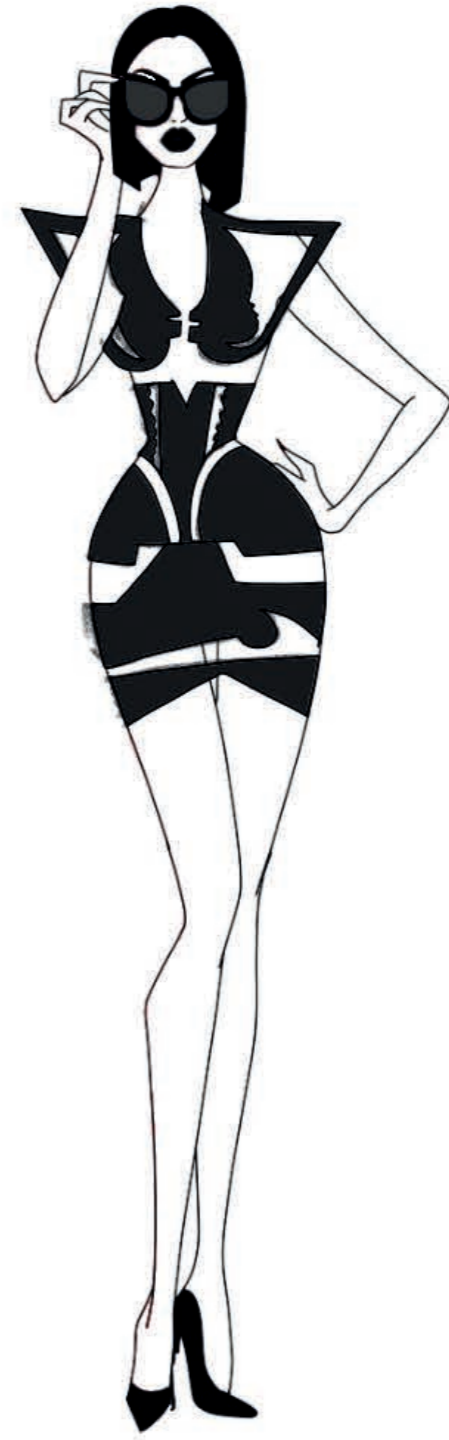
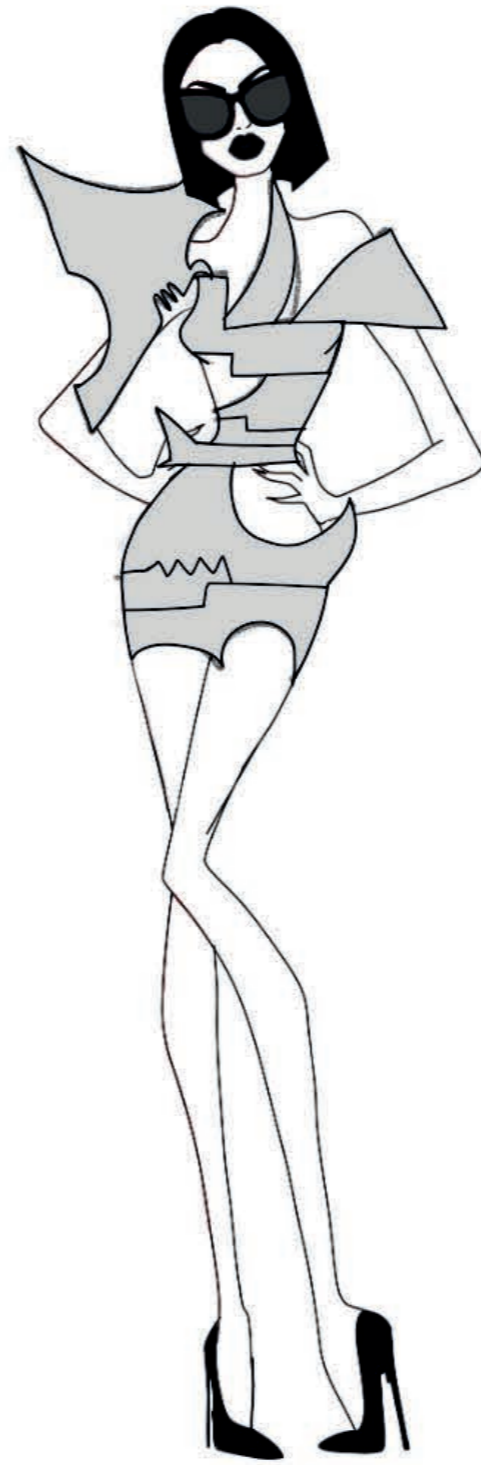
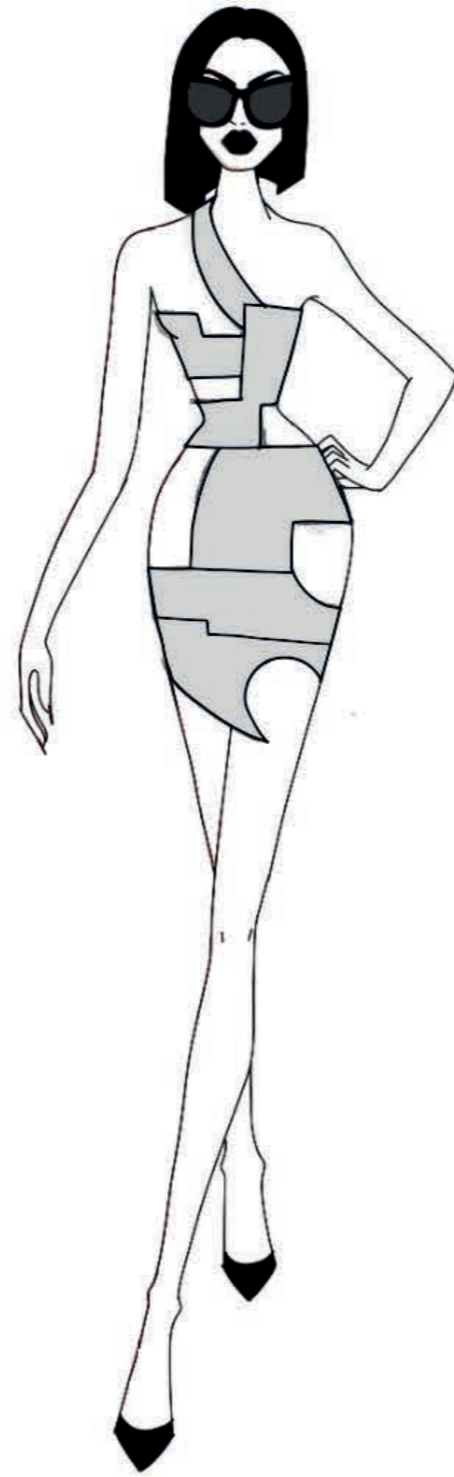
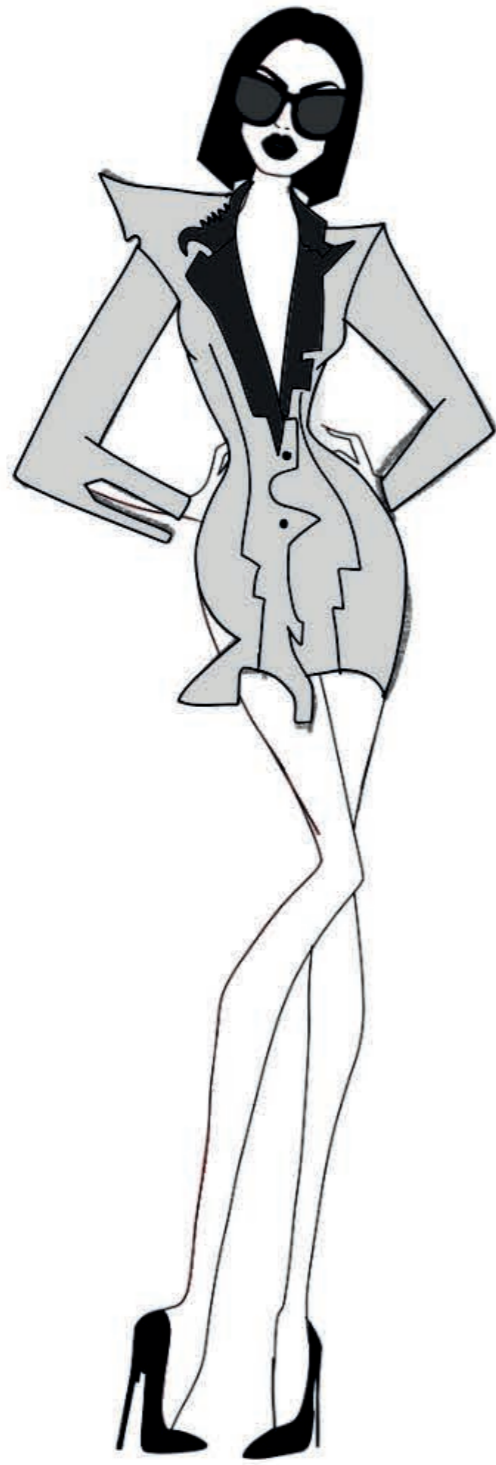


6 Line it with self-adhesive felt and burn the edges to make a clean finish



*Gun gown*



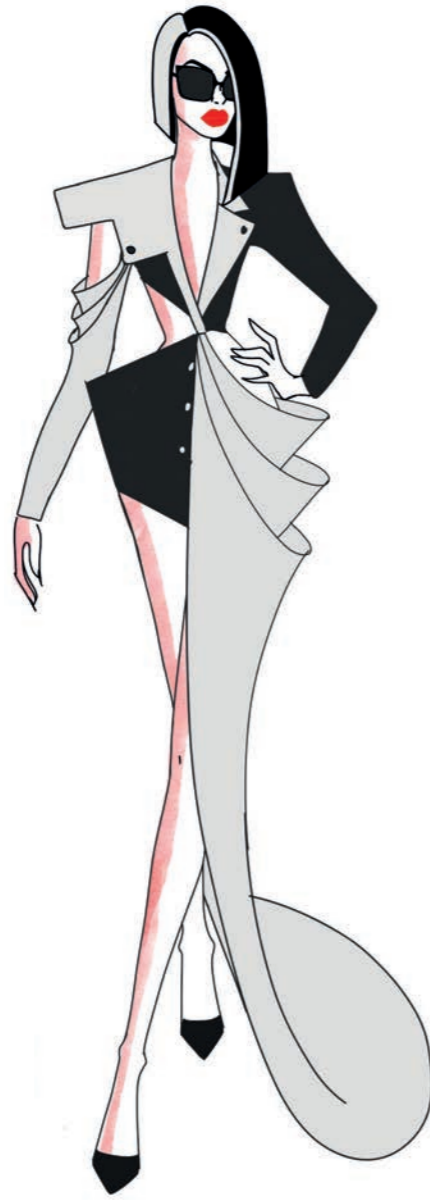


# "ALLUMEUSE"



*Shot*  
LOOK 1

WOOL TAILORED  
JACKET



*Drag*  
LOOK 2

SATIN AND WOOL  
TAILORED JACKET  
GOWN



*Fatale*  
LOOK 3

WOOL TAILORED  
JACKET AND  
TROUSERS LEGS



*Smoking*  
LOOK 4

WOOL BLAZER INSPIRED  
TOP WITH TAILORED  
TROUSERS



*Gun*  
LOOK 5

TULLE AND PATENT  
GOWN



*Melted*  
LOOK 6

MELTED PLASTIC  
JACKET DRESS



# Photographic line-up



“ALLUMEUSE”

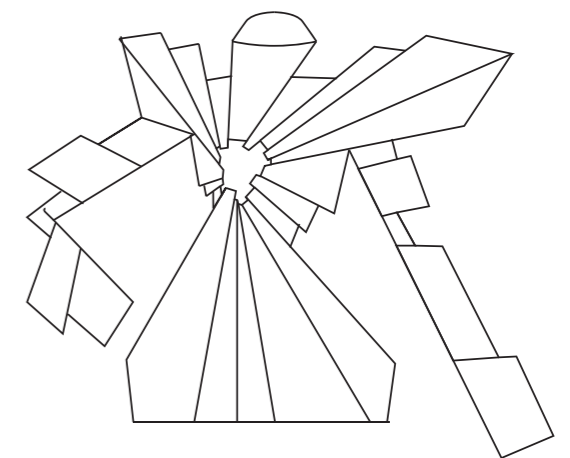
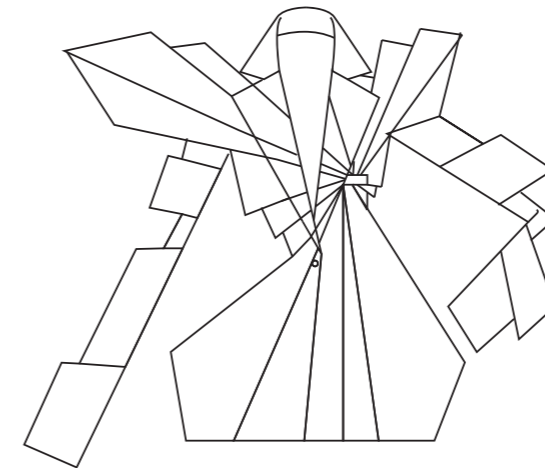


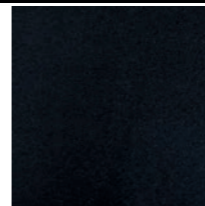
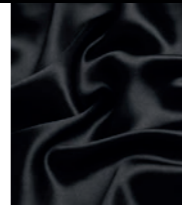


# TECH PACK

Dossier technique

LOOK 1  
*Shot*

COLLECTION	2023	STYLE		Suit jacket	
PRIMARY FABRIC/ <i>Tissu principal</i>	Black Suiting wool / <i>Laine tailleur noire</i>	COLOUR <i>Couleur</i>	Black / <i>Noir</i>	SUPPLIER <i>Fournisseur</i>	Misan
SECONDARY FABRIC/ <i>Tissu complémentaire</i>	Polyester silk satin / <i>Satin de soie polyester</i>	COLOUR	Black / <i>Noir</i>	SUPPLIER	Minerva
TRIM / HARDWARE / <i>Fournitures</i>	Button / <i>Boutton</i> Shoulderpads / <i>Epaulettes</i>	COLOUR	Black / <i>Noir</i>	SUPPLIER	Sewing centre
THREAD(S) / <i>Fil(s)</i>	Gutterman 120 polyester	COLOUR	Black / <i>Noir</i>	SUPPLIER	Sewing centre

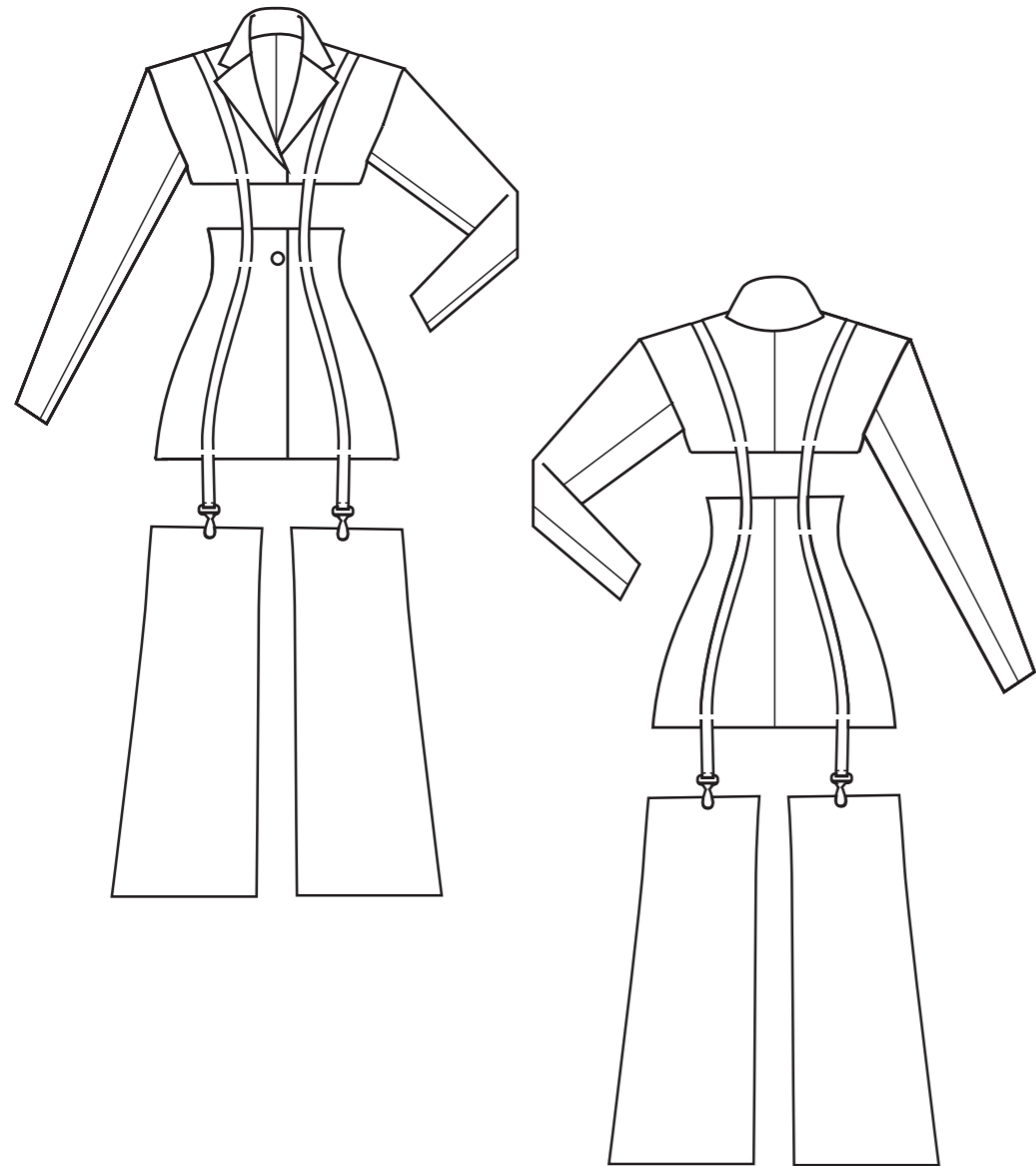


PRIMARY FABRIC ( <i>Tissu principal</i> )	LINING ( <i>Doublure</i> )	TRIM / HARDWARE ( <i>Fourniture</i> )	
			



LOOK 3

*Fatale*

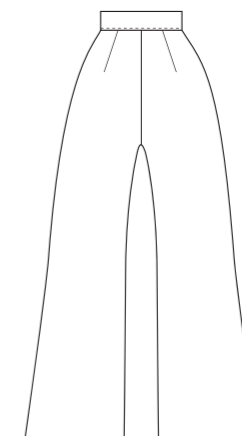
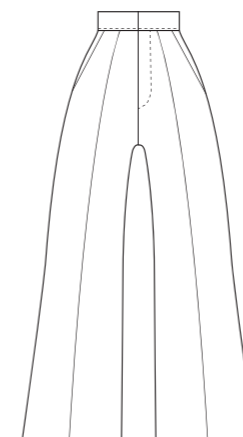




**TECH PACK**  
Dossier technique

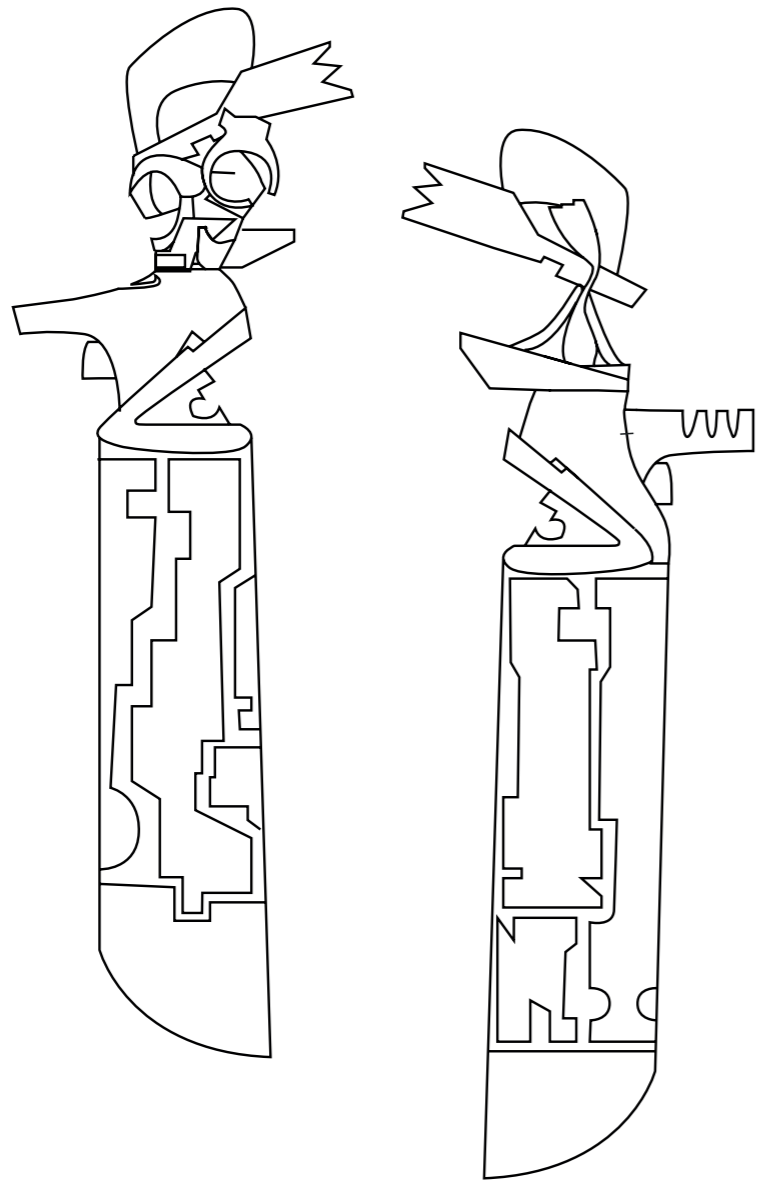
LOOK 4  
*Smoking*

COLLECTION	2023	STYLE		Suit jacket	
		COLOUR Couleur	Black / Noir	SUPPLIER Fournisseur	Misan
PRIMARY FABRIC/ Tissu principal	Black Suiting wool / Laine tailleur noire	COLOUR Couleur	Black / Noir	SUPPLIER Fournisseur	Misan
SECONDARY FABRIC/ Tissu complémentaire	Polyester silk satin / Satin de soie polyester	COLOUR	Black / Noir	SUPPLIER	Minerva
TRIM / HARDWARE / Fournitures	Button / Boutton Shoulderpads / Epaulettes Zip / Fermeture a glissière Hooks & bars / Crochets	COLOUR	Black / Noir	SUPPLIER	Sewing centre
THREAD(S) / Fil(s)	Gutterman 120 polyester	COLOUR	Black / Noir	SUPPLIER	Sewing centre

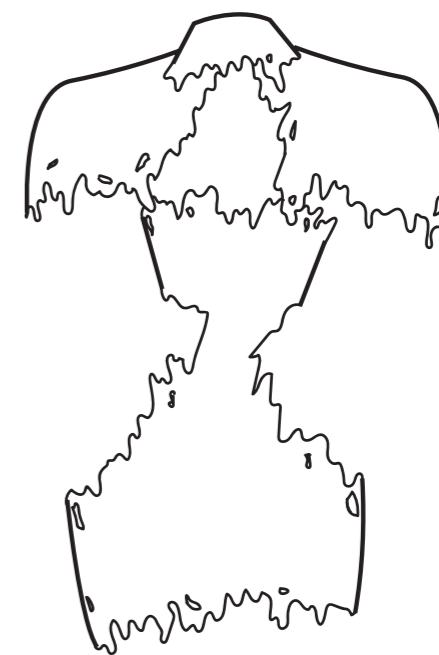
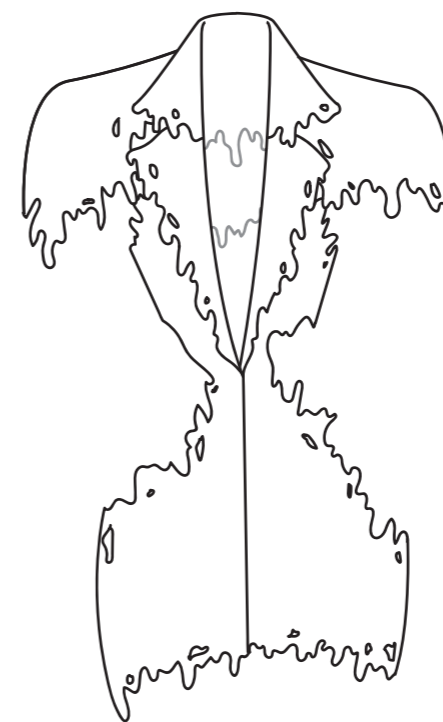


PRIMARY FABRIC (Tissu principal)	EMBELLISHMENT (Embellissement)	LINING (Doublure)	TRIM / HARDWARE (Fourniture)

LOOK 5  
*Gun*



LOOK 6  
*Melted*















ALLUMEUSE  
*Accessory line*

*Belts*



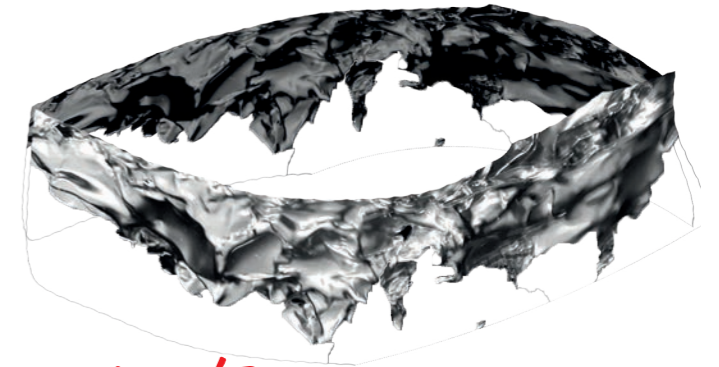
*Liaison fatale*

Silver stainless steel belt chain with handcuffs.  
Handcuff lock button fastening.



*Barbelet*

Silver stainless steel belt barbwire designed chain.  
Lobster claw fastening.



*Brulant*

Silver melted plastic belt with transparent vinyl paper protection inside.  
Side metal belt buckle fastening.



*Noir*

Leather black belt with silver stainless steel belt buckle.  
Hidden snaps fastening.



*En pieces*

Gun pieces inspired silver stainless steel belt.  
Side metal buckle fastening.



*Rupture*

Leather black belt with silver stainless steel belt buckle.  
Handcuff lock button fastening.

ALLUMEUSE  
*Accessory line*

*Shoes*



*Pistolet*

Black patent stiletto.  
Silver stainless steel gun-shaped heel.



*Obstacle*

Black patent stiletto.  
Silver stainless steel barbed wire heel.



*Enchainé*

Black patent stiletto.  
Silver stainless steel handcuff and chain attached to the back ankle and outer sides.



*Craquante*

Black patent stiletto.  
Silver molten metal covering the shoe.



*Enchainé*

Black patent stiletto.  
Silver stainless steel gun-shaped heel and ankle chain.



*Pouvoir*

Black patent stiletto.  
Silver molten metal covering the heel.

# § “DANGEREUSE”

*Collection Autumn/Winter 2023*

DEVELOPMENT OF AN AUTUMN/  
WINTER 2023 CAPSULE  
COLLECTION EXPLORING THE  
GAME OF LIGHT AND SHADOW  
IN 1940s FILM NOIRS THROUGH  
SHAPES AND PINSTRIPE  
DEVELOPMENT. AS THE SHADOW  
MAKES THINGS APPEAR BIGGER,  
THESE HIGH HAND TAILORED  
SUITS MADE OF CLASSIC FINE  
WOOLS ARE INSPIRED BY  
MENSWEAR TAILORING. THE  
VINTAGE PINSTRIPE TAILORED  
SUITS WILL DEVELOP INTO  
MORE DRAMATIC SILHOUETTES.

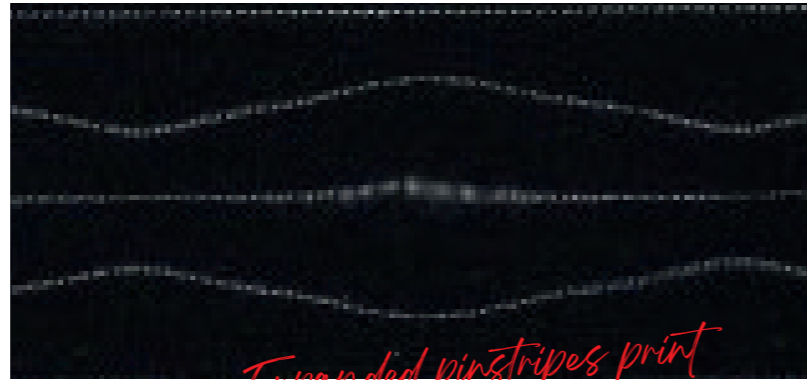


# § "DANGEREUSE"

Collection Autumn/Winter 2023



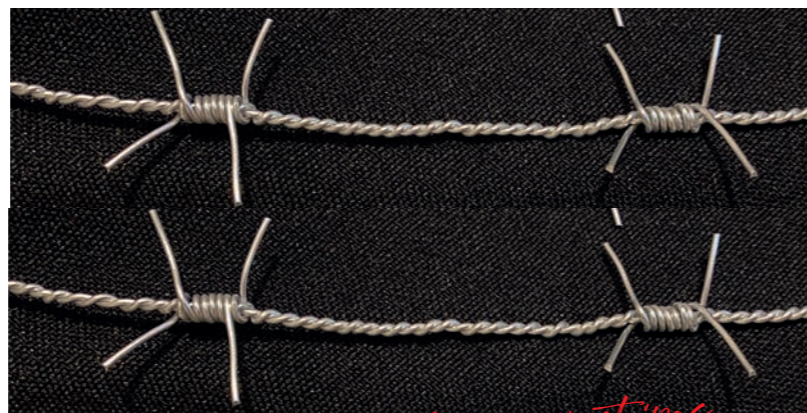
*Disrupted pinstripes print*



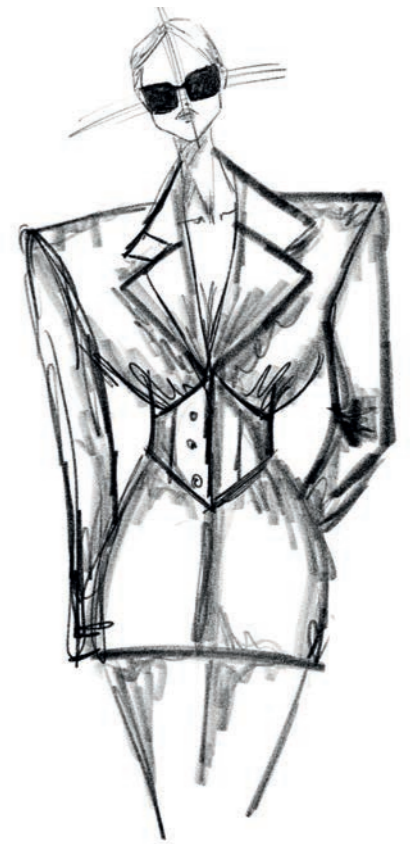
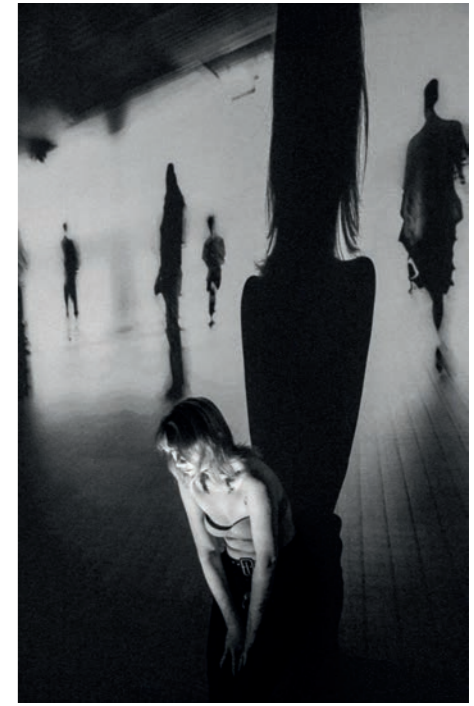
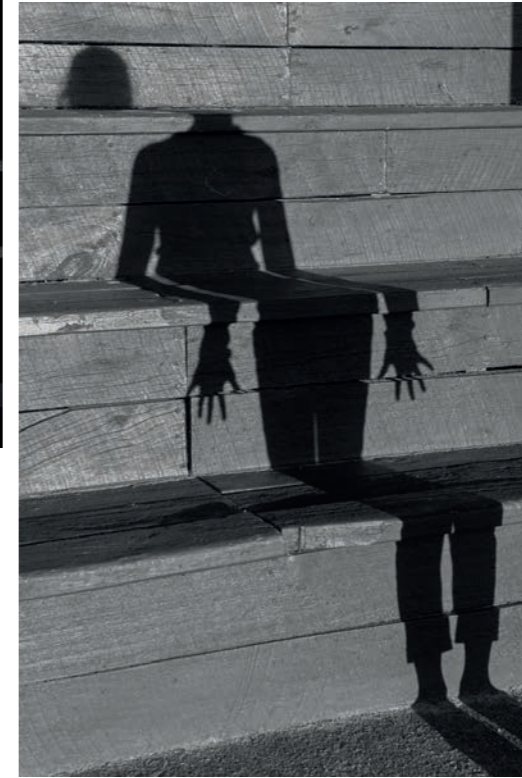
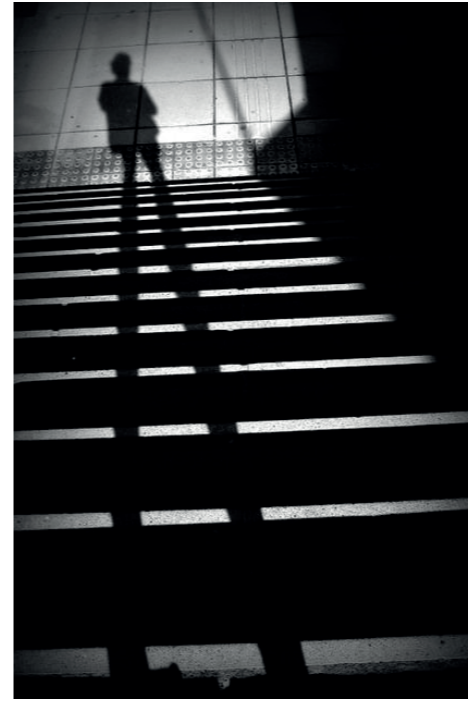
*Expanded pinstripes print*



*Chain pinstripes*

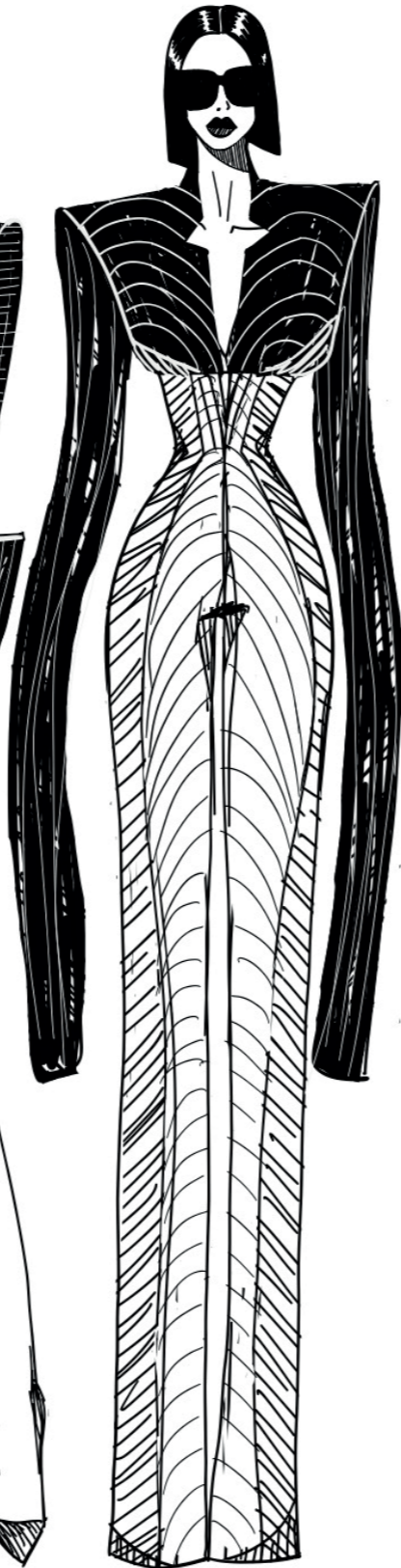


*Barb wire pinstripes*



# § "DANGEREUSE"

*Collection Autumn/Winter 2023*



# STELLA DARROUX

FASHION DESIGNER

## PROFILE

Creative and detail-oriented fashion designer with knowledge in pattern making (traditional and CAD) as well as sewing and draping skills.

Accustomed to performing well in fast-paced and deadline-driven projects. Offers extensive knowledge of multiple fashion design software programs and great communication skills with a deep passion for fashion and strong determination.

## CONTACT



**PHONE:**

+33 7 50 44 17 05



**EMAIL:**

stella010731@gmail.com



**INSTAGRAM:**

@ecarlate\_

## LANGUAGES

- **French**  
*Native*
- **English (UK)**  
*Fluent*
- **Spanish**  
*Basic conversation*

References Available  
on Request

## EDUCATION

- **University of Brighton, UK** 2020 - 2023  
BA (Hons) Fashion Design with Business Studies
- **Lyçée Gabriel Péri, Toulouse, France** 2018 - 2020  
BTS Metiers de la Mode et du Vetement
- **Lyçée Las Cases, Lavaur, France** 2015 - 2018  
Baccalauréat Economique et Social

## INDUSTRY EXPERIENCE

**Intern for final year Ciara Knight**

University of Brighton

FEB - MAY 2020

- Photoshoot planning/research
- Styling research
- Branding development

**Studio intern for Gomez-Gracia**

Gomez-Gracia, London

MAY - JULY 2019

- Pattern making / sewing
- Tech pack making
- Event planning (Private sale/Catwalk show)

**Pattern-maker for Gabrielle**

Gabrielle, Toulouse

SEPT 2018 - MAY 2019

- Pattern making (Modaris) / sewing
- Design development
- Promotion and sale organisation

## ACHIEVEMENTS

- **Graphic designer/Social media promotion**  
for DITZY Magazine JAN 2023
- **Lyçée Gabriel Peri catwalk show** APR 2020

## CAD SKILLS

Microsoft Office



Lectra



Fresco



Illustrator



Photoshop



InDesign



Premiere Pro



CLO 3D

