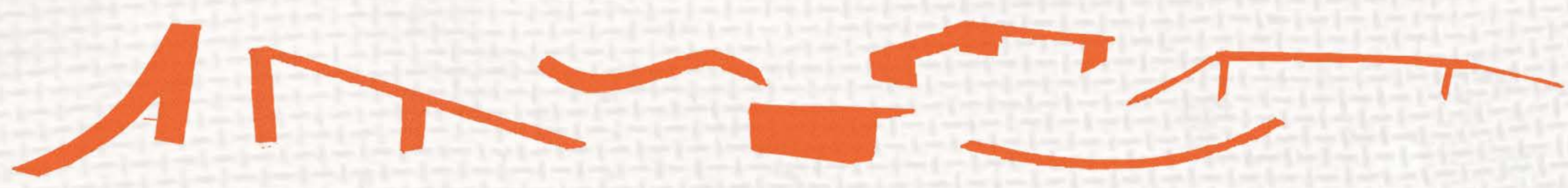


URBAN APPENDAGE

MIMA JUPP

MICROINDUSTRY IN NEWHAVEN located in a so called 'forgotten' or 'falling' town, the project recognises that it may not be in need of a forceful 'regeneration', but more of an innovative bottom-up approach to help the town gain more life, culture, community.



the multifaceted experience of a wheelchair user and/or a skateboarder is often riddled with prejudice and restraint.

however, the ways in which both communities experience the urban realm repeatedly proves to break out of social norms, as true experts of the built environment - negotiating it at every pot hole, curb, stair or slope - these so-called 'unruly' people with 'unruly' bodies begin to unravel alternative ways of looking at the design of public spaces.

Instead of designing the ordinary, for the ordinary and instead, valuing the rich diversity of these perceived 'problematic' communities, we steer away from limiting building regulations, rules, binary categorisation and assumptions.

urban appendage aims to create somewhat rebellious wooden appendages for the street furniture and terrain of newhaven to assist in the defiance of 'ordinary' everyday activity.

'appendage'

... in the context of the project, (appendage) will be referring to a wooden structure made by and for wheelchair users and skateboarders in particular
 ... the appendage has just as much importance/functionality as the original terrain or street furniture.

a non-exhaustive INVENTORY OF EXCLUSIONS in the urban realm

	SKATEBOARDERS	WHEELCHAIR USERS
PHYSICAL	<p>responsibility for skaters refers to the location of a spot, how easy it is to get to and whether it is well known." -Holley and Johns, 2007</p> <p>'skate hater' - spikes and holes added to handrails, blocks of concrete placed at the foot of banks, chains & frame catches and steps... (simultaneously affects the homeless population) cracked pavements gravel sand</p>	<p>accessibility for wheelchair users can be synonymous with independence. "being able to continue with daily life without having to ask strangers for help or hand extra money... not having to think about it", just being herself." -"skater", London (the guardian, 2007)</p> <p>narrow shop entrances scaffolding on both sides of the street inaccessible public transport</p> <p>uneven pavements damaged curb pots circular 'tree' (tree cut) sandwich boards on pavements manhole covers pushed over uneven pavement edges potholes when crossing road gravel</p>
SOCIAL	<p>skateable urban elements</p> <p>specifically employed security guards shop keepers non participants</p> <p>complaints that contribute to exclusion: noisy, obstructive, dangerous physically 'scaring' surfaces skate marks, left deck paint, strapping paint off leaving graffiti on the city</p> <p>curfew city ordinances by-laws banning skating in certain areas</p>	<p>curbs stairs ramps gutters hand rails walls</p> <p>curbs stairs steep so called 'accessible' ramps no ramp at entrance of buildings</p> <p>prejudice thoughtlessness harmful stereotypes language used stigma</p>
COMMON	intentionally excluded	"outcasts" (un)intentionally excluded
IF ONLY	<p>if the urban realm was inclusive of skaters: increased health, fitness inclusivity of young people social benefits, creating a community of sharing, helping one another, co-operation increased confidence free urban activity</p>	<p>balance movement strength (on the upper body) MCM (wheelchair motorcross) a performance of the body through space intent (look) thinking ahead defining social norms restricted</p> <p>if the urban realm was inclusive of chair users: wider variety of voices in decision making larger population in education, employment, voting makes spaces more usable for everyone (from pushers, cyclists, those with limited mobility)</p>



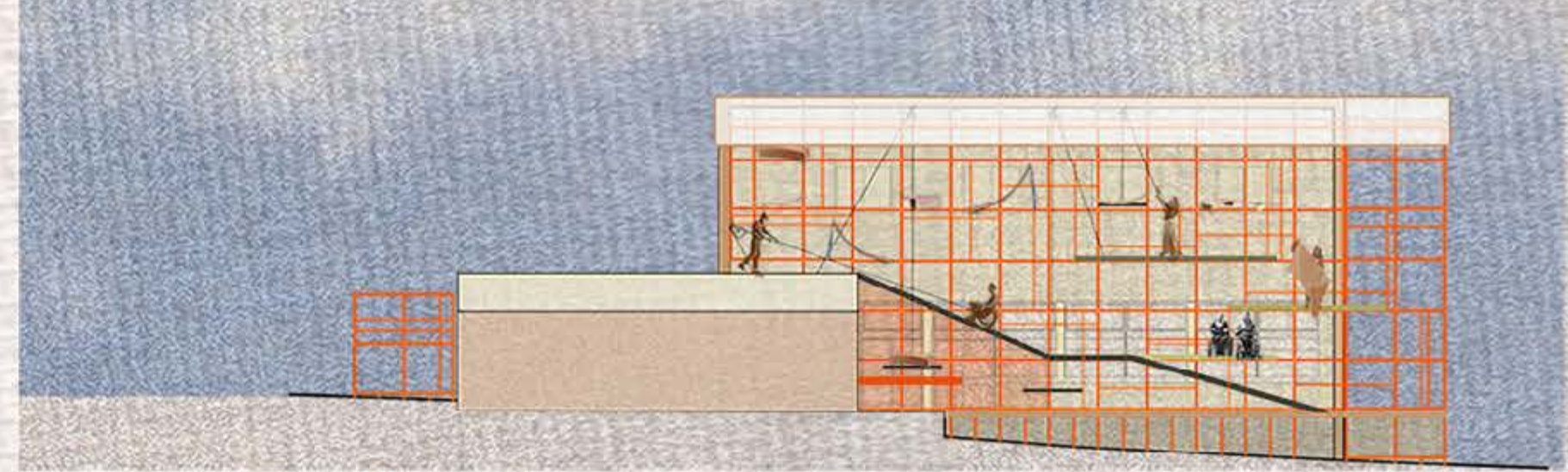
one of the most noticeable things on the facade: the sign demanding "no skateboarding".
 before even entering the site, skaters are excluded from the high street

upon entering the delivery office: it feels as though you are being imprisoned in a different world. the courtyard feels like a secret hub where activities come to end out and nobody from the high street knows about all the magic happening out back.
 the collage aims to represent this feeling

BUSINESS AS USUAL



BEYOND THE FACADE



EXISTING SECTION



[PROGRAMME & PROCESS] MAKING THE TOWN MORE ACCESSIBLE



URBAN MAPPING: STREET FURNITURE & OBSTACLES

1. railings	a1	a2	b2	c2
2. bollard				
3. bench				
4. handrail				
5. street sign				
6. lamp post				
7. life buoy				
8. bike rack				
9. bin				
10. bus stop				
11. ledge				

a. pavement step up
 b. steps
 c. grassy area
 d. decline/decline

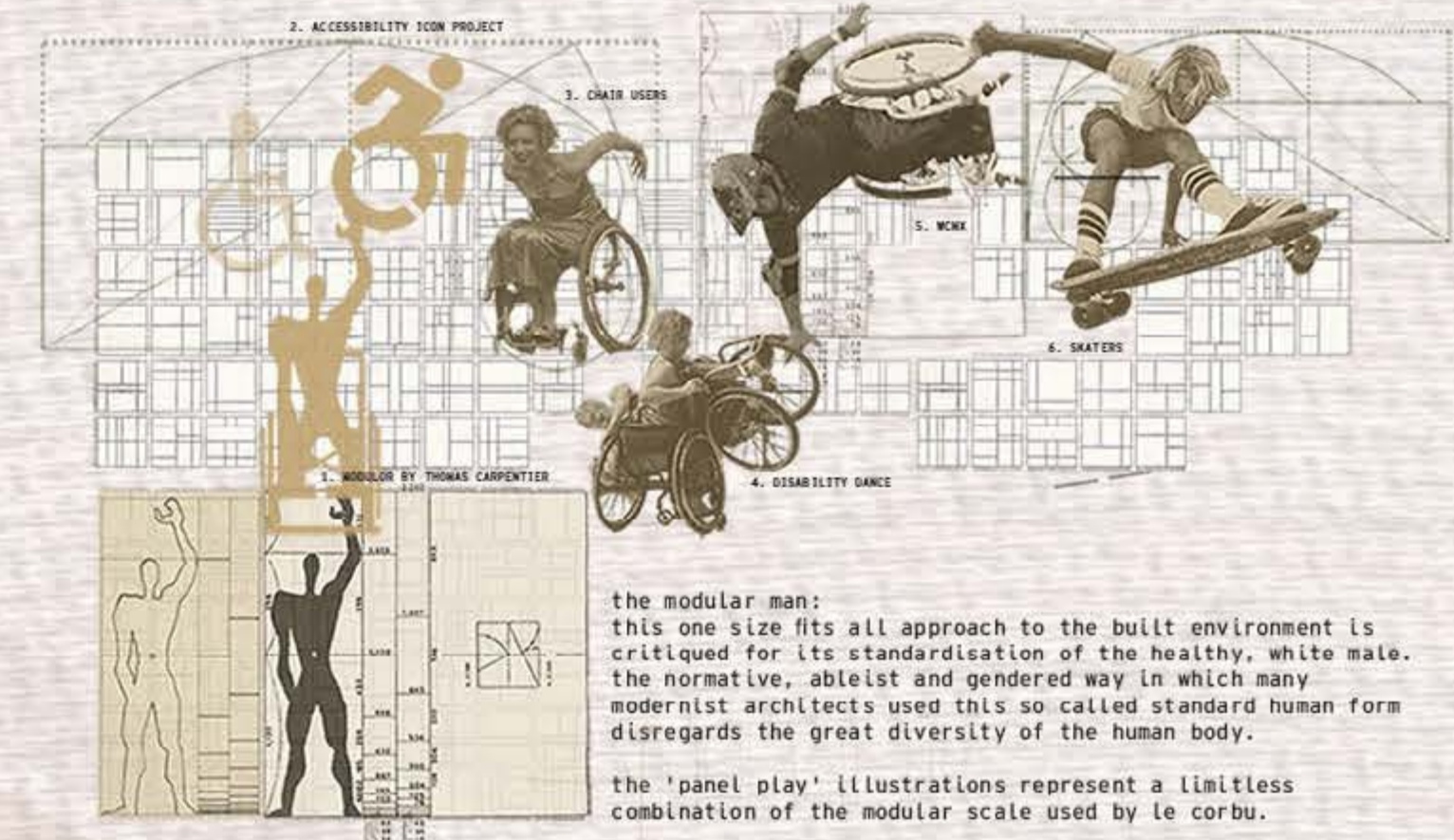
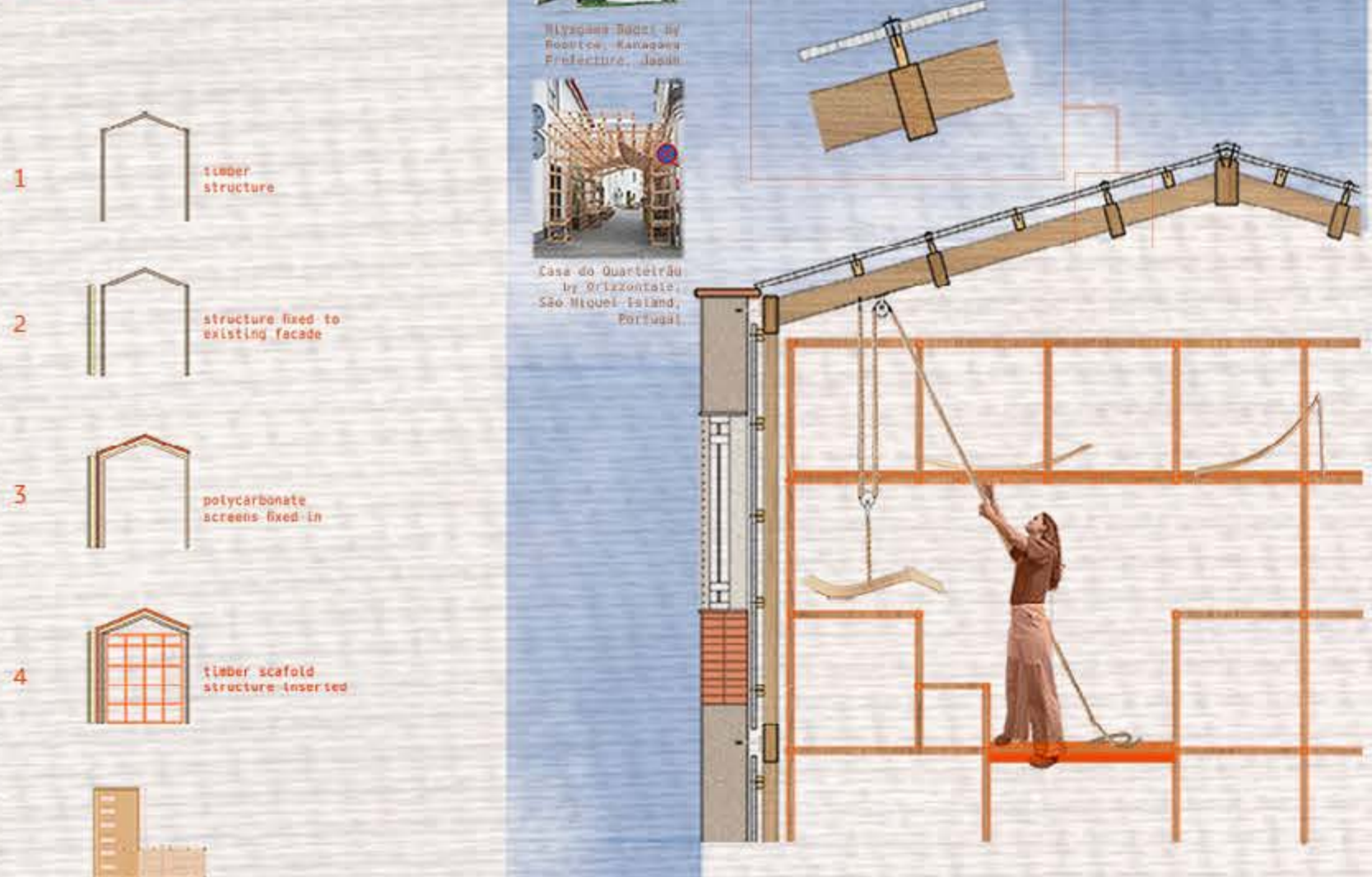
- CROSS ROADS
- TUNNEL
- RAILINGS
- TRAFFIC LIGHTS
- BENCH
- WALL
- STEPS
- SHIP BOW
- LEDGE
- GUTTER

PRODUCTS OF THE WORKSHOP
 temporary to semi permanent ply structures making the town more accessible - for both skateboarders and wheelchairs...
 ... and inevitably as with most public furniture, a wider group of unexpected users as well.

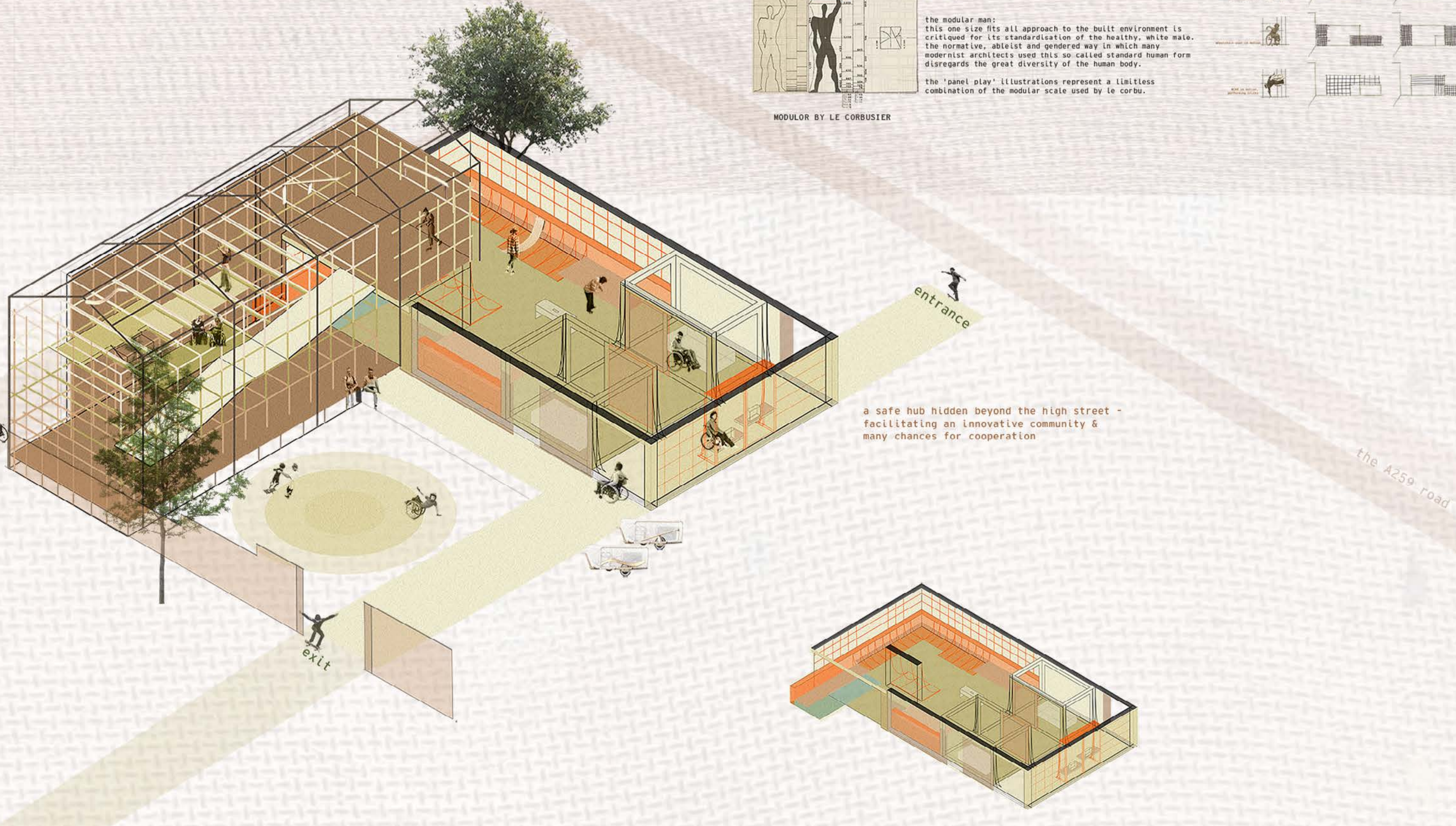
PLY APPENDAGE PROCESS

- seeking a spot in the town with potential
- taking pictures, measurements to bring to the workshop
- sourcing local materials and woods
- accessing/uploading design files on opensource software
 CNC machine/ laser cutting files
- kerf bending [for curved appendages]
 varnishing, treating, painting
- delivering to the chosen location...
 using it

SCAFFOLD STRUCTURE SECTION



TOWARD A NEW 'NORMAL'



THE SCAFFOLD HIVE



THE WOODWORKSHOP

